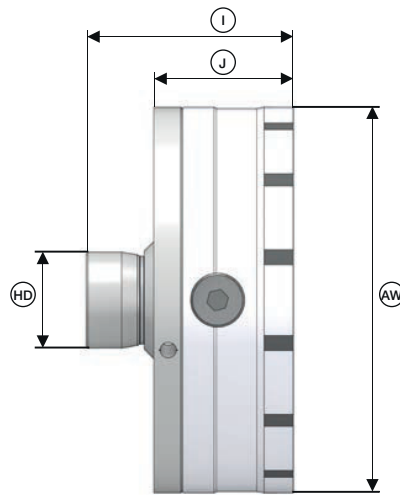




Magnet module starter-set. Technical data and order overview



| Product line | SE | | | RD | | | |
|----------------------------|------------|------------|------------|------------|------------|------------|------------|
| Size | 52 | 65 | 100 | 52 | 65 | 80 | 100 |
| Size – magnet module | | | | 200 | | | |
| Clamping force [N/cm²] | | | | 140 | | | |
| RPM n max. [1/min.] | | | | 2500 | | | |
| Min. draw force axial [kN] | | | | 10 | | | |
| Total length [mm] | | | | I | | | |
| Height [mm] | | | | J | | | |
| Outer Ø [mm] | | | | AW | | | |
| Outer Ø 2 [mm] | | | | 52 | | | |
| Weight [kg] | | | | 18 | | | |
| In stock | ✓ | ✓ | ✓ | ✓ | ✓ | ✓ | ✓ |
| Order no. | 10824/0001 | 10824/0002 | 10824/0003 | 10825/0001 | 10825/0002 | 10825/0003 | 10825/0004 |

Please note: The magnet module is only suitable for modular and pull-back clamping devices.

Clamping head for magnet module. For use of an existing magnet module on a different chuck size.

| Product line | Size | In stock | Order no. |
|--------------|------|----------|------------|
| SE | 52 | ✓ | 10824/2001 |
| | 65 | ✓ | 10824/2002 |
| | 100 | ✓ | 10824/2003 |
| RD | 52 | ✓ | 10825/2001 |
| | 65 | ✓ | 10825/2002 |
| | 80 | ✓ | 10825/2003 |
| | 100 | ✓ | 10825/2004 |