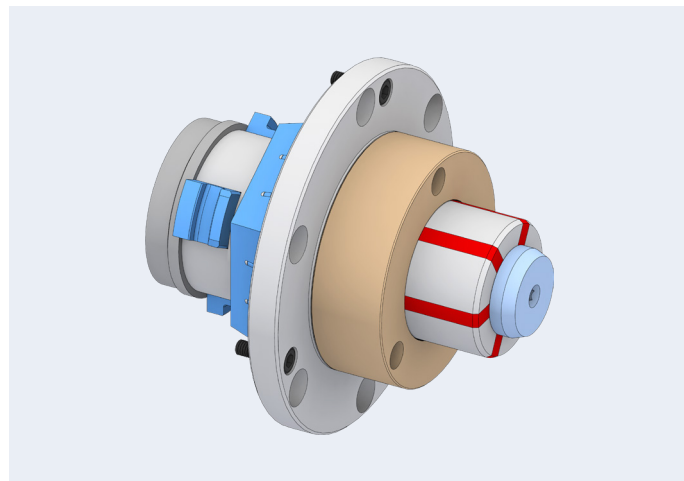


### Adaptation for changing over from O.D. clamping to I.D. clamping

Size	0, 1, 2, 3, 4
Clamping range	20–120 mm

#### Advantages

- Extremely fast conversion without detachment of the basic clamping device [1 – 2 min.]
- Large clamping range and vibration dampening due to vulcanized clamping elements
- Standard segmented clamping bushings and workpiece end-stops for machining to size available
- Workpiece stabilization through axial draw force applied against the workpiece end-stop
- Less expensive segmented clamping bushings and end-stops compared to MANDO T212



#### Clamping elements



SB segmented clamping bushing

#### Suitable for



TOPlus mini pull-back / SPANNTOP mini pull-back



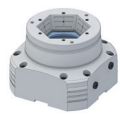
TOPlus Combi pull-back / SPANNTOP nova Combi pull-back



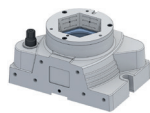
TOPlus Modular / SPANNTOP nova Modular



TOROK SE / TOROK RD



HYDROK SE / RD



MANOK plus SE / RD