

## ADAPTATION CLAMPING DEVICES

### 3-jaw module



#### Adaptation for changing from O.D. clamping to jaw clamping

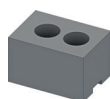
Size	145, 215
Clamping range	25–209 mm
Suitable for the following basic clamping device sizes	65, 80, 100

#### Advantages

- Jaw clamping in the HAINBUCH chuck or stationary chuck
- Extremely fast conversion from O.D. to I.D. without detachment of the base clamping device [2 min.]
- Self-centering on the basic clamping device
- Enlarged clamping range of the basic clamping device
- Deadlength clamping without pull-back effect
- Optimal lubrication and resistant to contamination thanks to the lubricating system
- Machining between the jaws is possible [milling or drilling]
- Handy and lightweight compared to 3-jaw chucks
- Run-out  $\leq 0.020$  mm for remachined soft jaws



#### Clamping elements



Jaws

#### Suitable for



TOPlus mini pull-back /  
SPANNTOP mini pull-back



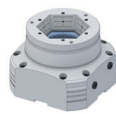
TOPlus Combi pull-back /  
SPANNTOP nova Combi pull-back



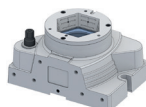
TOPlus Modular /  
SPANNTOP nova Modular



TOROK SE / TOROK RD



HYDROK SE / RD



MANOK plus SE / RD