

## STATIONARY CLAMPING DEVICES

### hs dock



### Hydraulic actuating unit for MAXXOS and MANDO mandrels

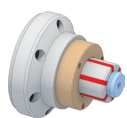
Size XXS-4, 5-7, A-F

#### Advantages

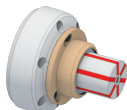
- Mandrels can be used on machining center
- Ideal for 5-sided machining
- Hydraulic actuation
- Ideal for automated clamping
- Can be combined as desired for multiple clamping



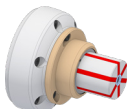
#### Adaptations



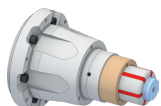
MANDO T211  
[Mandrel with draw bolt]



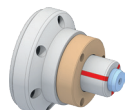
MANDO T212  
[Mandrel without draw bolt]



MANDO T812  
[Deadlength mandrel without draw bolt]



MANDO G211  
[Mandrel for gear cutting, for example with draw bolt]



MAXXOS T211  
[Mandrel for the utmost accuracy, with draw bolt]