

## CHUCKS

### SPANNTOP nova Combi pull-back

#### Chucks with the »classic« round clamping geometry

Size 32, 42, 52, 65, 80, 100, 125, 160  
Clamping range 3–160 mm

#### Advantages

- Ideal for customers with existing RD clamping heads
- Typical features of all HAINBUCH power chucks, such as high holding power, parallel clamping with high accuracy and easy set-up
- Minimal inertia loss compared to 3-jaw chucks
- Workpiece stabilization through axial draw force applied against the workpiece end-stop
- Prepared for inside and front end-stop
- Converts to a fully functional »bar chuck« when the end-stop plate is removed

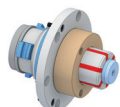


#### Clamping elements

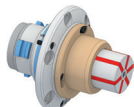


Clamping head RD

#### Adaptations



MANDO Adapt T211 RD  
[Mandrel-in-clamping-device, with draw bolt]



MANDO Adapt T212 RD  
[Mandrel-in-clamping-device, without draw bolt]



Jaw module RD  
[Adaptation for jaw clamping]



Face driver RD / morse taper adapter RD  
[Adaptation for clamping between centers]



Magnet module RD  
[Adaptation for magnetic clamping]