

CHUCKS

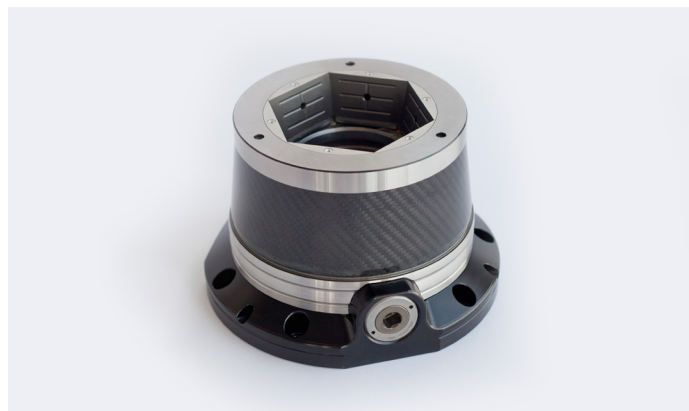
Manual chuck TOROK CFK

Chuck with manual actuation

Size 52, 65
Clamping range 3–65 mm

Advantages

- Manual actuation – a clamping cylinder is not required
- Sensitive clamping possible
- Workpiece stabilization through axial draw force applied against the workpiece end-stop
- Mandrels, jaw modules, face drivers, and morse taper adaptable
- Made of carbon fiber
- 1/3 lighter than the standard model



Clamping elements

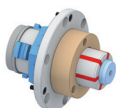


Clamping head SE

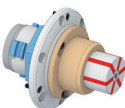


Clamping head RD

Adaptations



MANDO Adapt T211 SE / RD
[Mandrel-in-clamping-device, with draw bolt]



MANDO Adapt T212 SE / RD
[Mandrel-in-clamping-device, without draw bolt]



Jaw module SE / RD
[Adaptation for jaw clamping]



Face driver / morse taper adapter SE / RD
[Adaptation for clamping between centers]



Magnet module SE / RD
[Adaptation for magnetic clamping]