

CHUCKS

TOPlus premium pull-back



Maximum precision in a mini format

Size 52, 65
Clamping range 3–65 mm

Advantages

- Run-out accuracy $\leq 5 \mu\text{m}$ with premium clamping heads, otherwise $\leq 10 \mu\text{m}$ [requires clamping against the workpiece end-stop]
- For precise and powerful clamping
- Changeable to I.D. or jaw clamping [HAINBUCH SYSTEM]
- Less expensive than hydro-expansion and diaphragm clamping devices]
- Significantly reduced interference contour
- 25 % higher holding power than SPANNTOP
- Improved tool accessibility
- Ideal for limited installation space
- Lower mass
- Minimal inertia loss compared to 3-jaw chucks

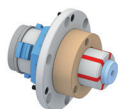


Clamping elements

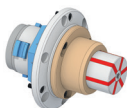


Clamping head SE

Adaptations



MANDO Adapt T211 SE
[Mandrel-in-clamping-device, with draw bolt]



MANDO Adapt T212 SE
[Mandrel-in-clamping-device, without draw bolt]



Jaw module SE
[Adaptation for jaw clamping]



Face driver SE / morse taper adapter SE
[Adaptation for clamping between centers]



Magnet module SE
[Adaptation for magnetic clamping]