

CHUCKS

SPANNTOP mini pull-back

Chucks with the »classic« round clamping geometry and reduced interference contour

Size 32, 42, 52, 65, 80, 100
Clamping range 3–100 mm

Advantages

- Significantly reduced interference contour
- Improved tool accessibility
- Ideal for limited installation space
- Lower mass
- Minimal inertia loss compared to 3-jaw chucks
- Adaptation devices possible [modular system]
- Workpiece stabilization through axial draw force applied against the workpiece end-stop
- Prepared for inside and front end-stop
- Converts to a fully functional »bar chuck« when the end-stop plate is removed

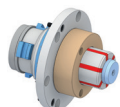


Clamping elements

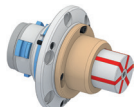


Clamping head RD

Adaptations



MANDO Adapt T211 RD
[Mandrel-in-clamping-device, with draw bolt]



MANDO Adapt T212 RD
[Mandrel-in-clamping-device, without draw bolt]



Jaw module RD
[Adaptation for jaw clamping]



Face driver RD / morse taper adapter RD
[Adaptation for clamping between centers]



Magnet module RD
[Adaptation for magnetic clamping]