

## CHUCKS

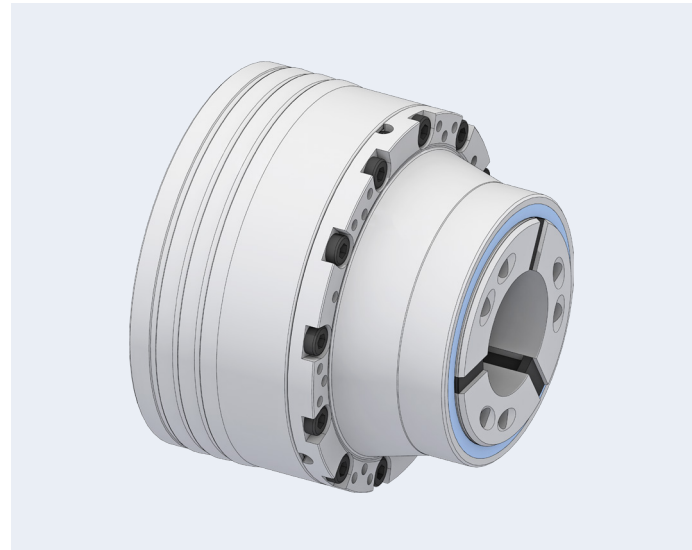
### SPANNTOP mini deadlength

#### Chucks with the »classic« round clamping geometry and reduced interference contour

Size 32, 42, 52, 65, 80, 100  
Clamping range 3–100 mm

#### Advantages

- Significantly reduced interference contour
- Improved tool accessibility
- Ideal for limited installation space
- Lower mass
- Minimal inertia loss compared to 3-jaw chucks
- Adaptation devices possible [modular system]
- Workpiece clamping without axial movement of the clamping head
- Clamps workpieces with a short collar or shoulder
- Suitable for pick-off without pull-back effect
- Prepared for inside and front end-stop
- Converts to a fully functional »bar chuck« when the end-stop plate is removed

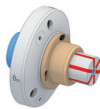


#### Clamping elements



Clamping head RD

#### Adaptations



MANDO Adapt T812 RD  
[Mandrel-in-clamping-device, without draw bolt]