

CHUCKS

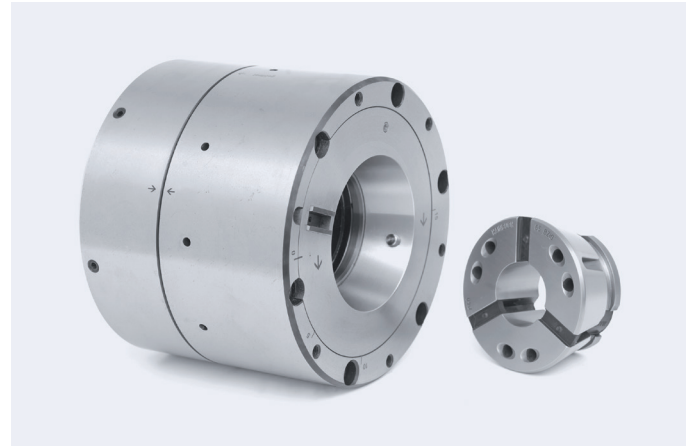
Eccentric chuck

Concentric and eccentric machining in a single clamping set-up

Size	65
Clamping range	3–65 mm

Advantages

- Infinite eccentric adjustment via the c-axis
- Concentric and eccentric machining in a single clamping set-up
- Different eccentric dimensions are possible with the same chuck and clamping head [maximum eccentricity 15 mm]
- Minimal inertia loss compared to 3-jaw chucks
- Workpiece stabilization through axial draw force applied against the workpiece end-stop
- Standard clamping heads can be used



Clamping elements



Clamping head RD