



TOROK

manual chuck

TOROK manual chuck

Reduced interference contour:



TOROK manual chuck

TOROK chuck with manual actuation:

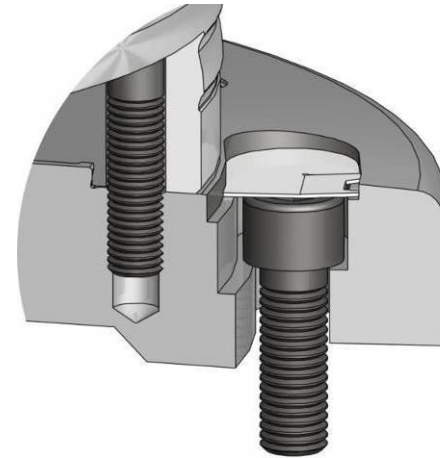
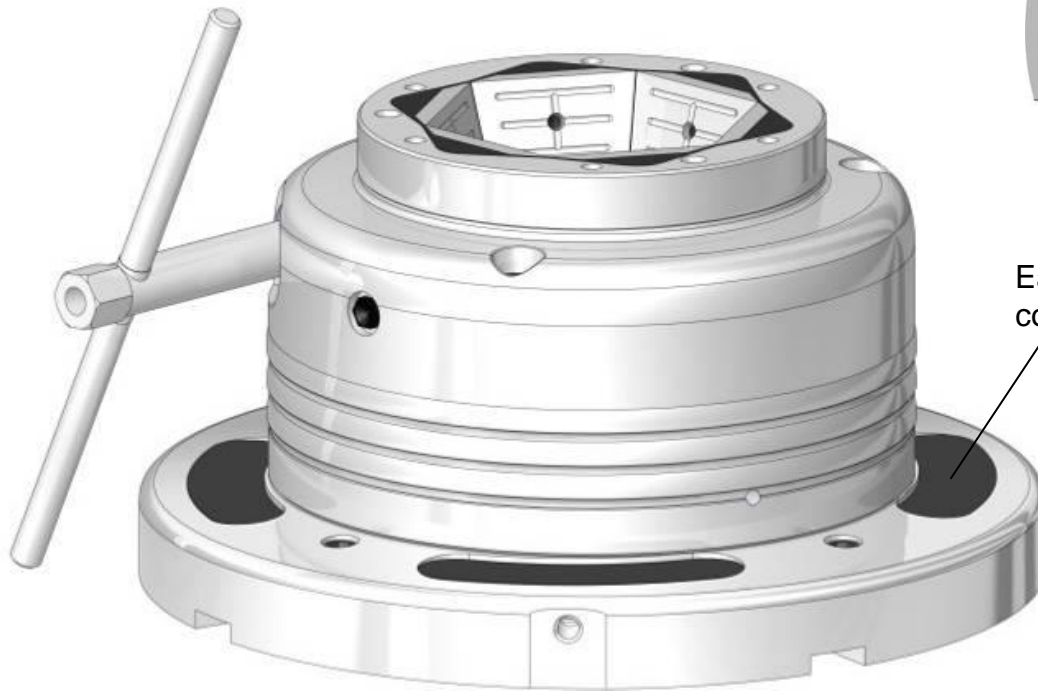
- Sensitive and powerful manual clamping
- Vibration damping
- Pull-back clamping
- Precise



TOROK manual chuck

Suitable for mill-turn applications:

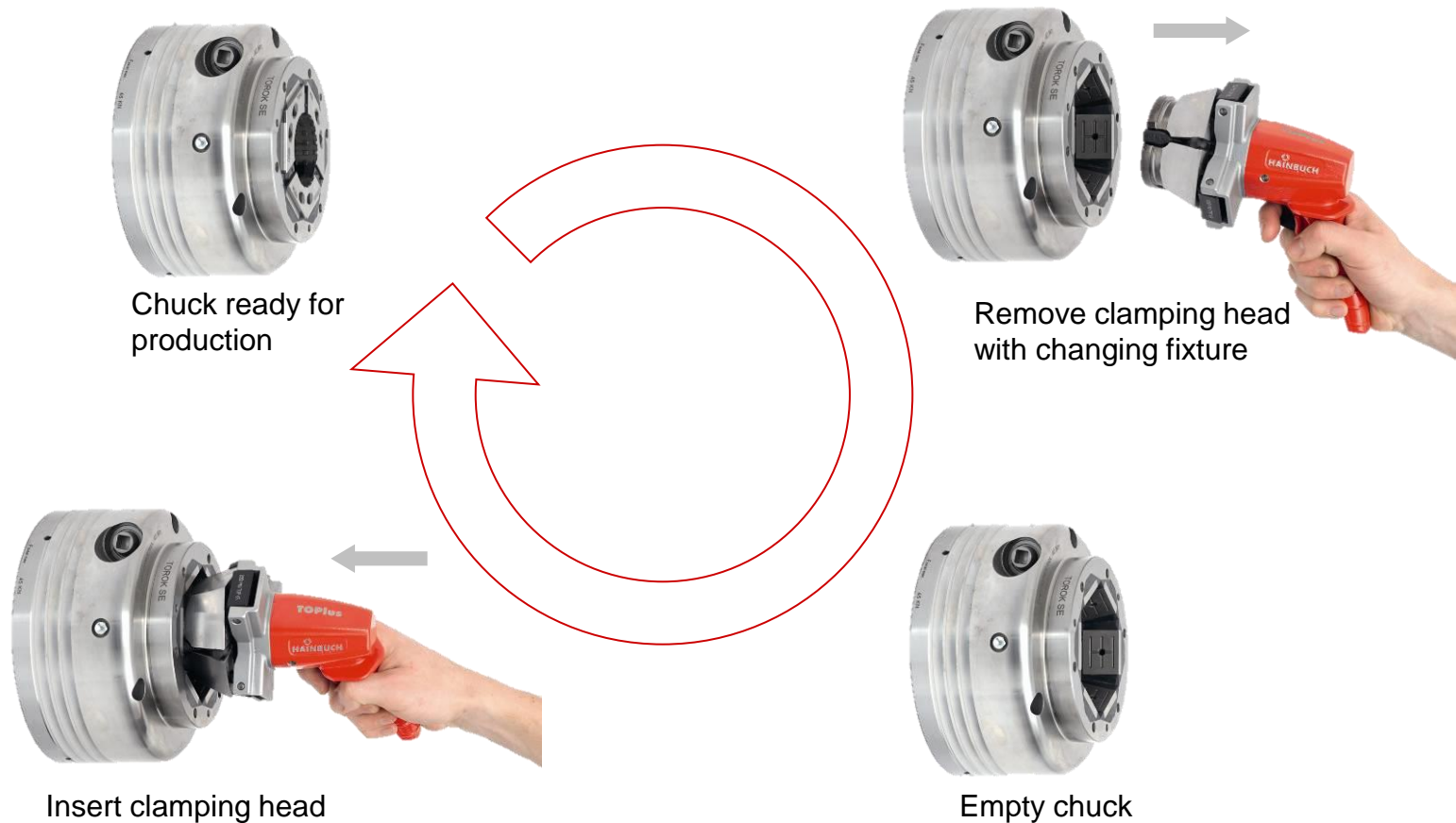
- Actuated from the side
- Simple and small interference contour
- Up to 6000 RPM



Easy to operate because of covered grooves and screws

TOROK manual chuck

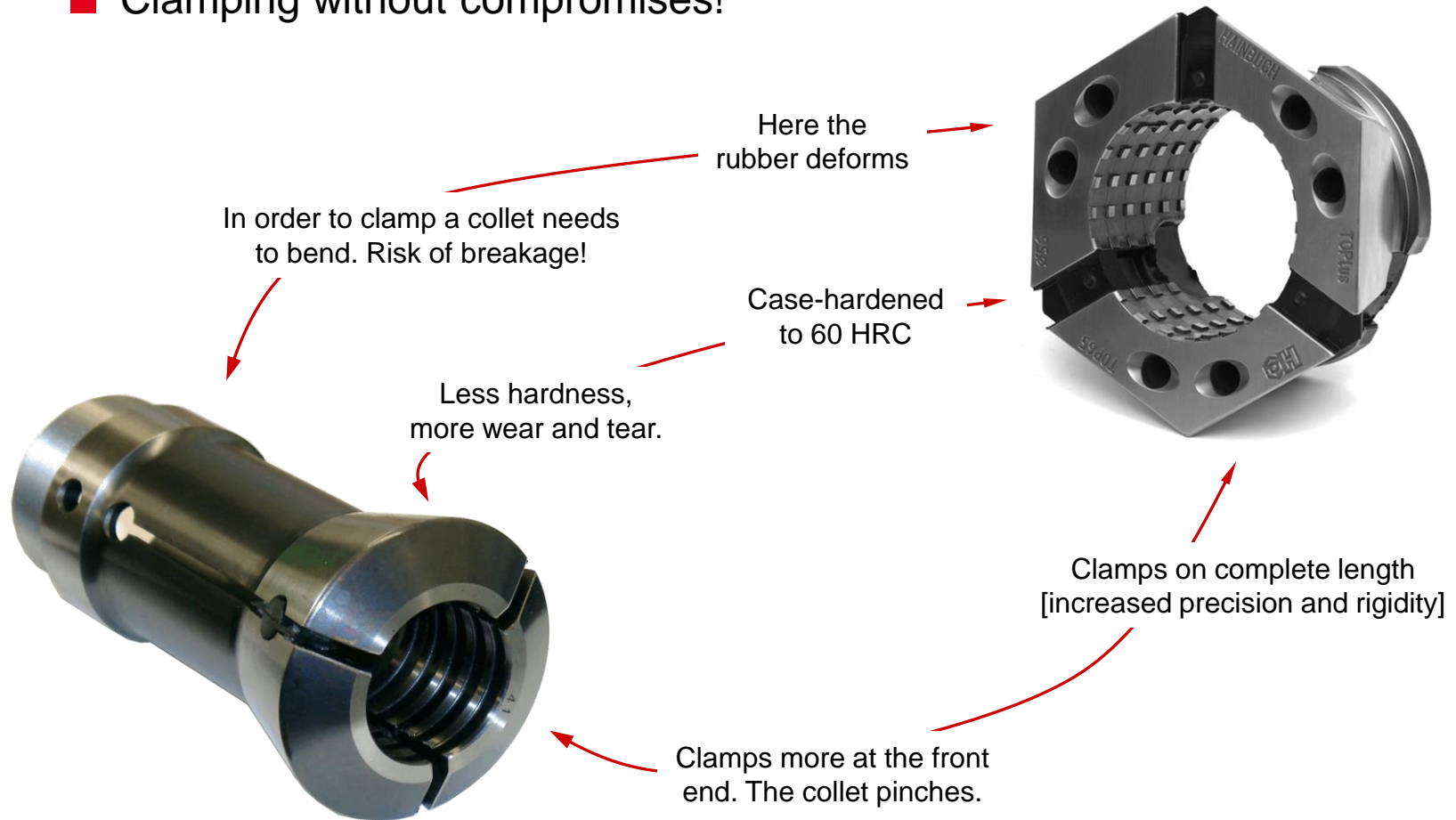
Change-over in seconds:



TOROK manual chuck

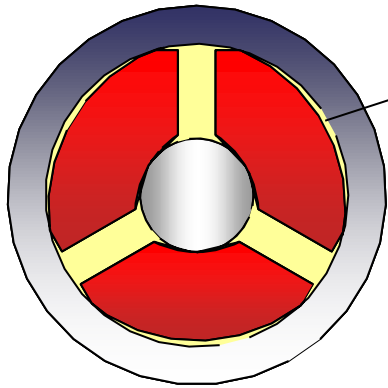
Comparison of clamping head and collet:

- Clamping without compromises!



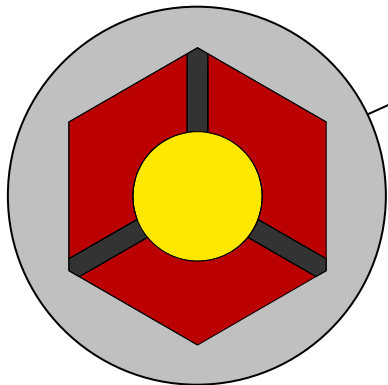
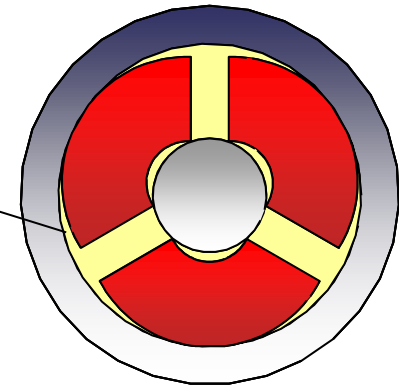
TOROK manual chuck

Comparison of the round and hexagonal system:



Depending on the clamping position, there are small gaps between clamping element [red] and chuck body [grey].

- weak spot with regard to contamination
- lubrication is washed away



Full contact in all clamping positions.
Very resistant to contamination.

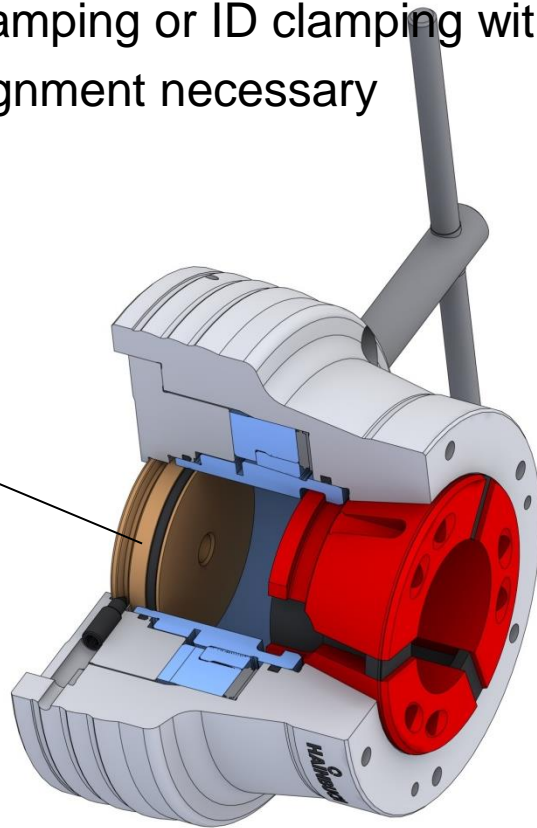
- lubrication is maintained
- at least 25% higher clamping force in the field
- less wear and tear
- less vibrations!

TOROK manual chuck

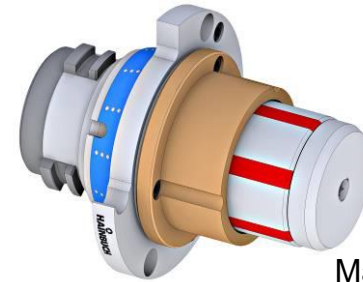
The HAINBUCH modular system:

- Change-over in less than 3 min to jaw clamping or ID clamping with mandrel
- No alignment necessary

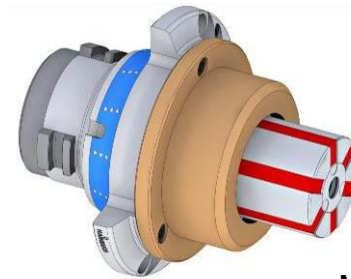
Removable end-stop for full through-bore



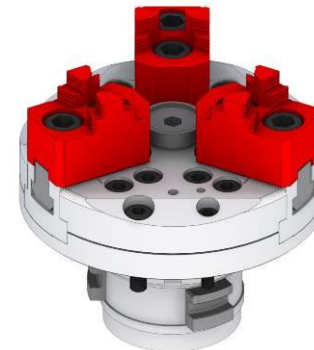
OD clamping with clamping head



Mandrel
MANDO Adapt T211



Mandrel
MANDO Adapt T212

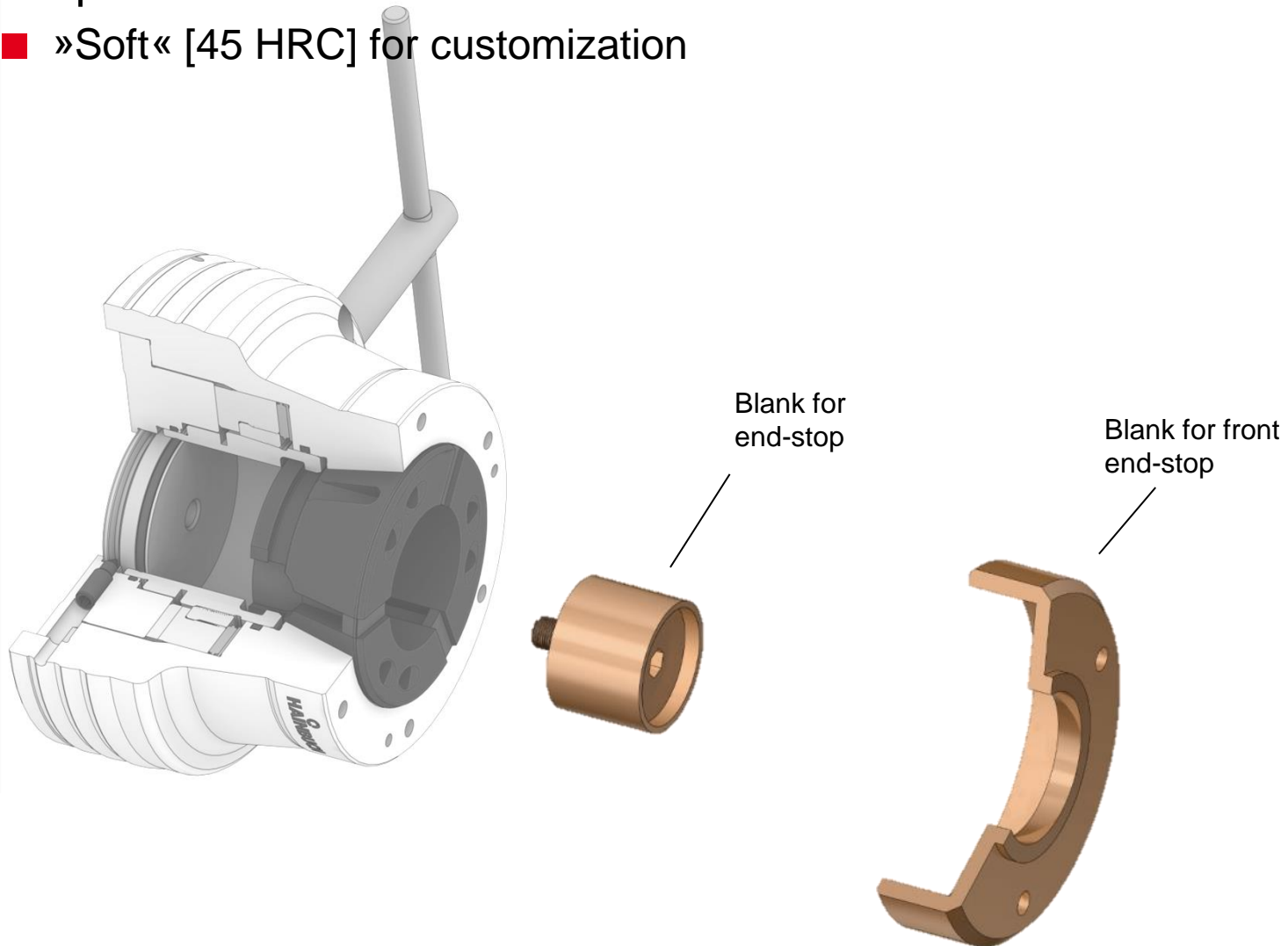


Jaw module
sizes 144 and 215

Accessory

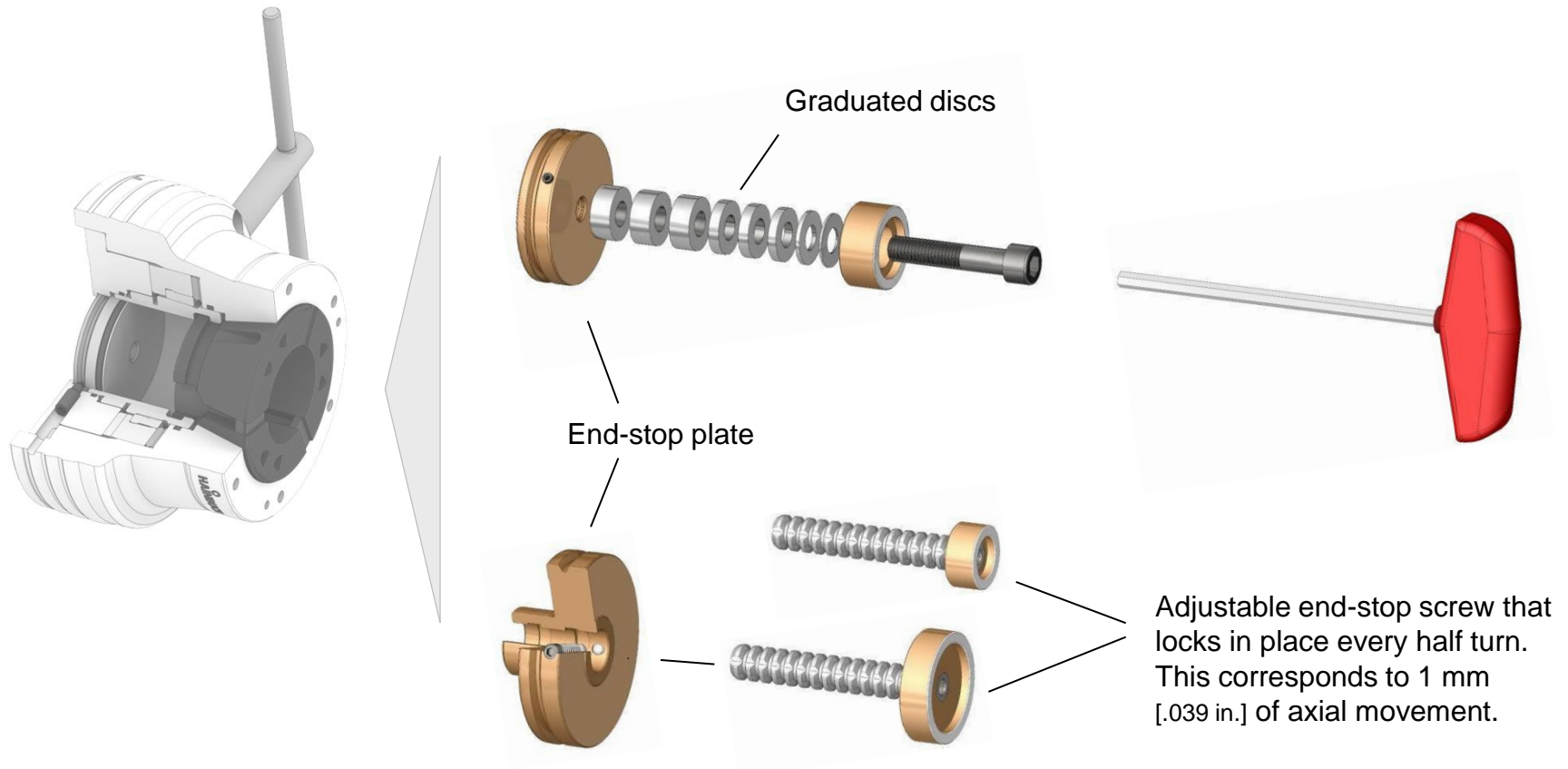
End-stop blanks:

- »Soft« [45 HRC] for customization



Accessory

Adjustable end-stop systems:



And what can we do for you?