

TOPlus

hexagon chuck

TOPlus chuck

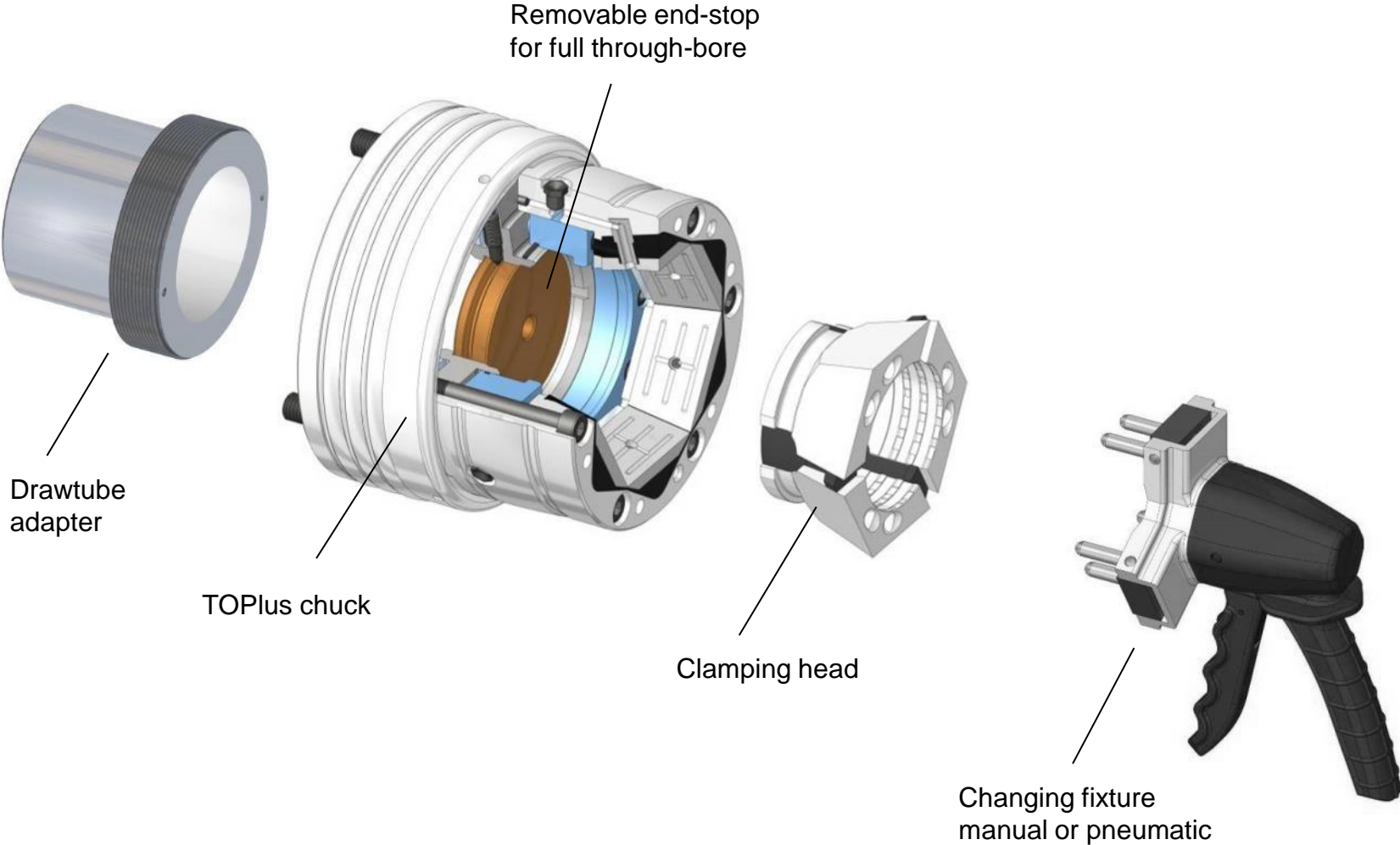
TOPlus combi pull-back chuck:

- Minimal workpiece deformation due to enclosed clamping
- Precise and vibration damping
- Rigid clamping for high RPM
- Pull-back clamping



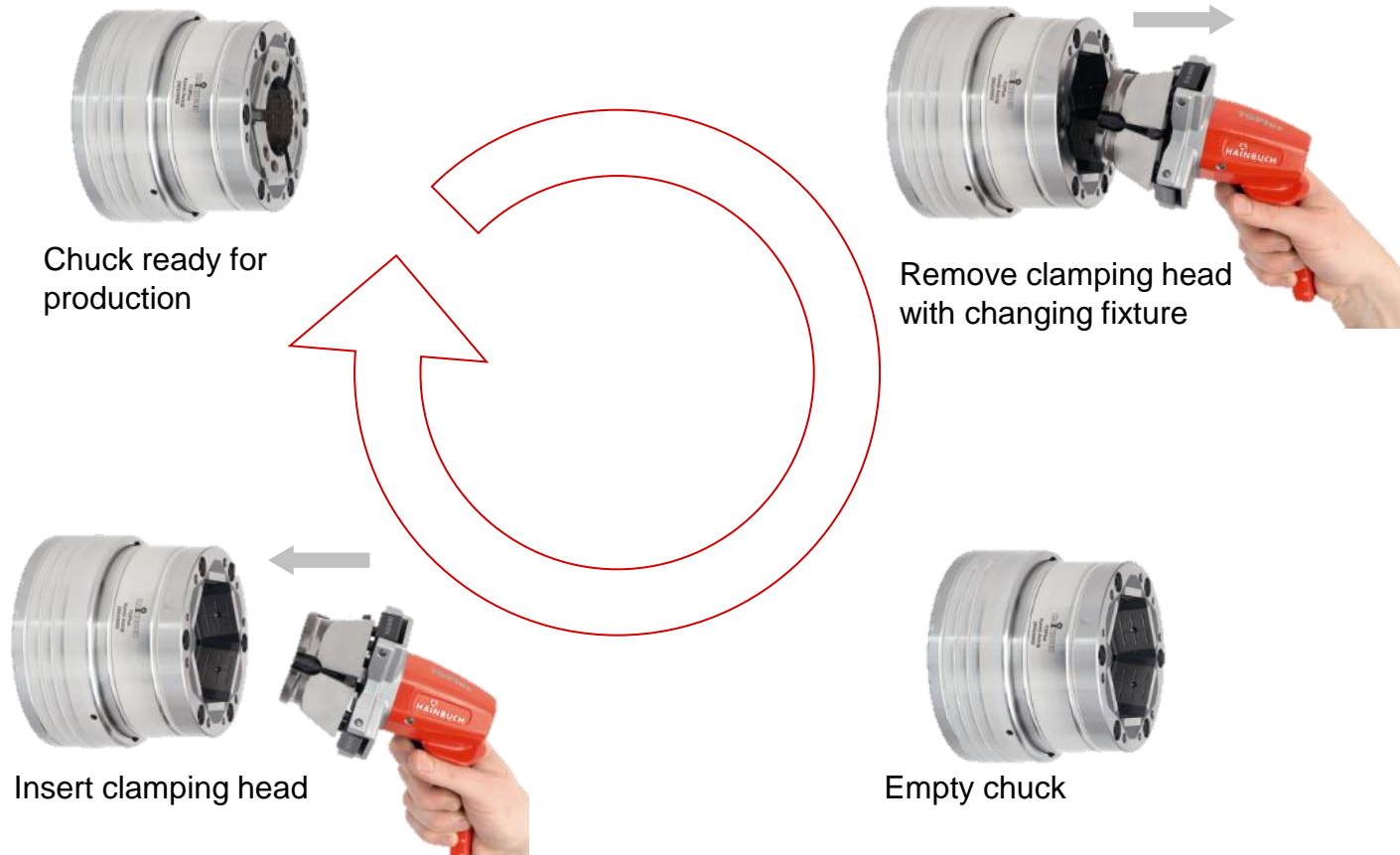
TOPlus chuck

Buildup:



TOPlus chuck

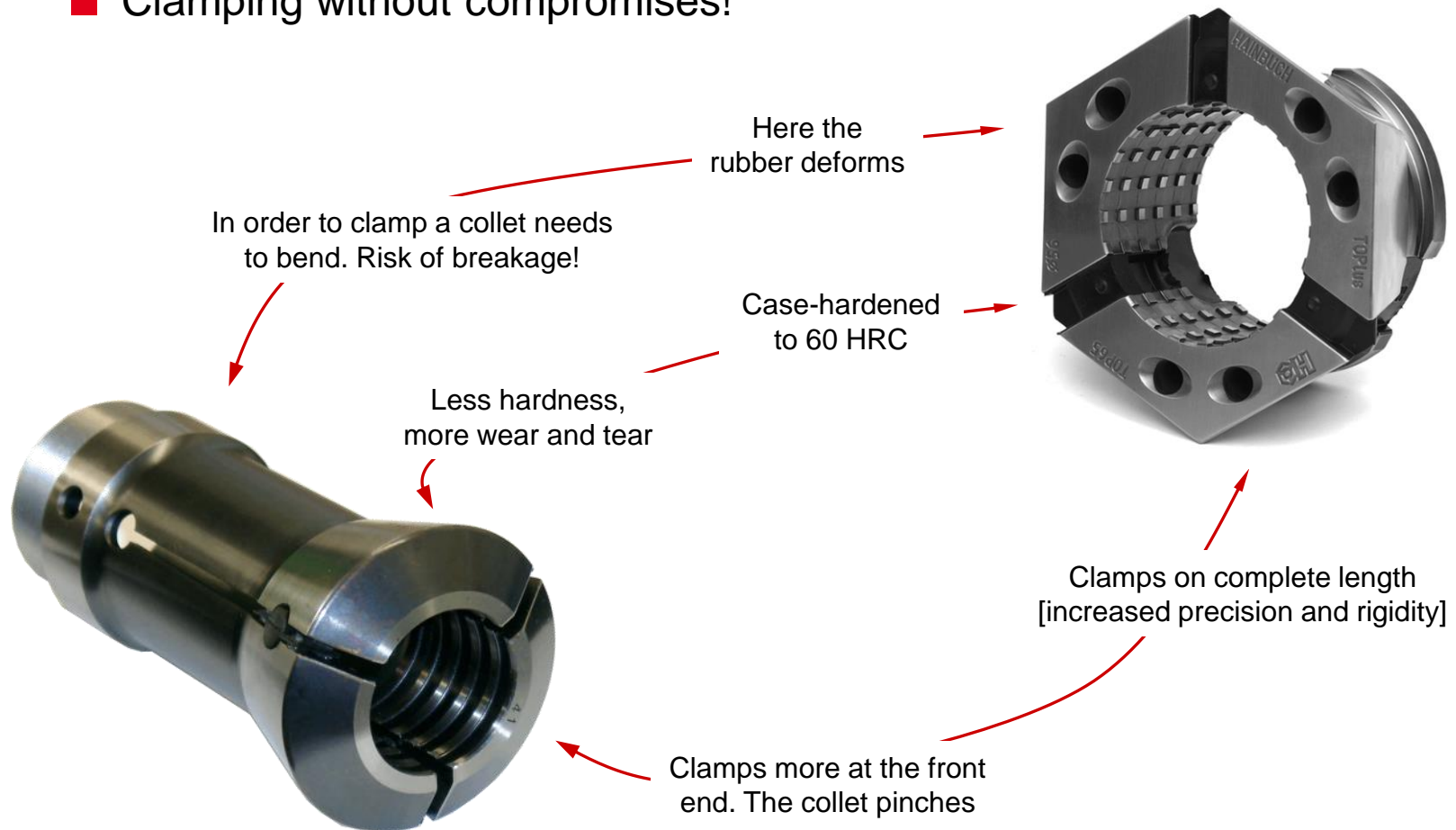
Change-over in seconds:



TOPlus chuck

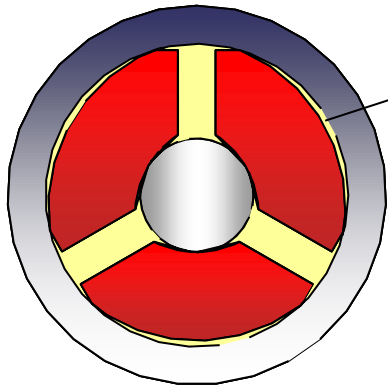
Comparison of clamping head and collet:

- Clamping without compromises!



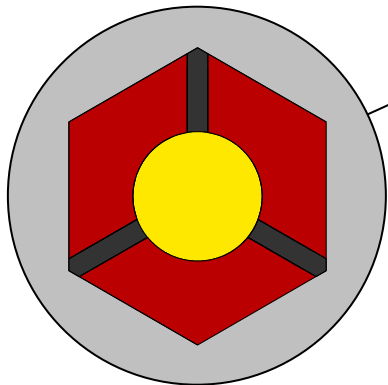
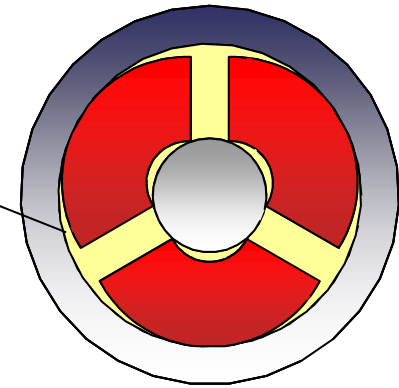
TOPlus chuck

Comparison of the round and hexagonal system:



Depending on the clamping position, there are small gaps between clamping element [red] and chuck body [grey].

- weak spot with regard to contamination
- lubrication is washed away



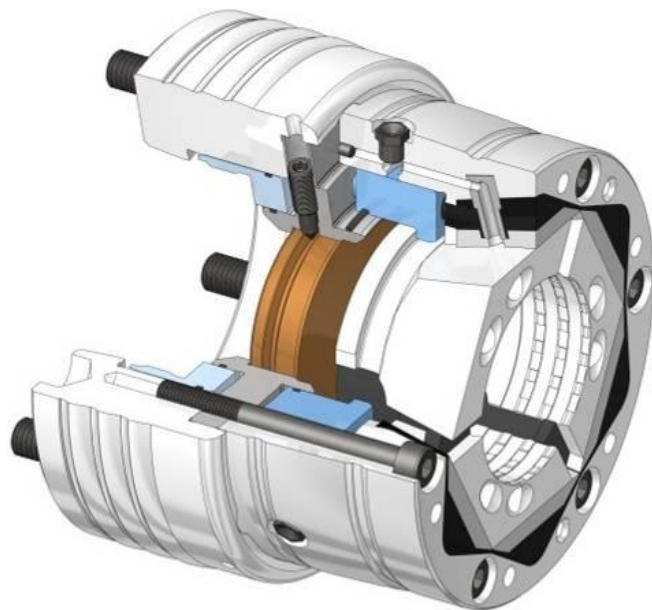
Full contact in all clamping positions.
Very resistant to contamination.

- lubrication is maintained
- at least 25% higher clamping force in the field
- less wear and tear
- less vibrations!

TOPlus chuck

The HAINBUCH modular system:

- Change-over in less than 3 min to jaw clamping or ID clamping with mandrel
- No alignment necessary



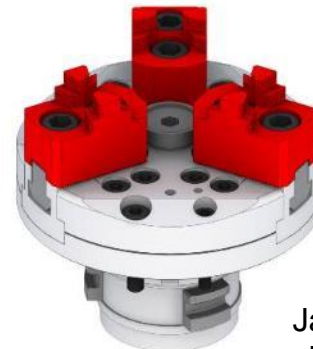
OD clamping with clamping head



Mandrel
MANDO Adapt T211



Mandrel
MANDO Adapt T212

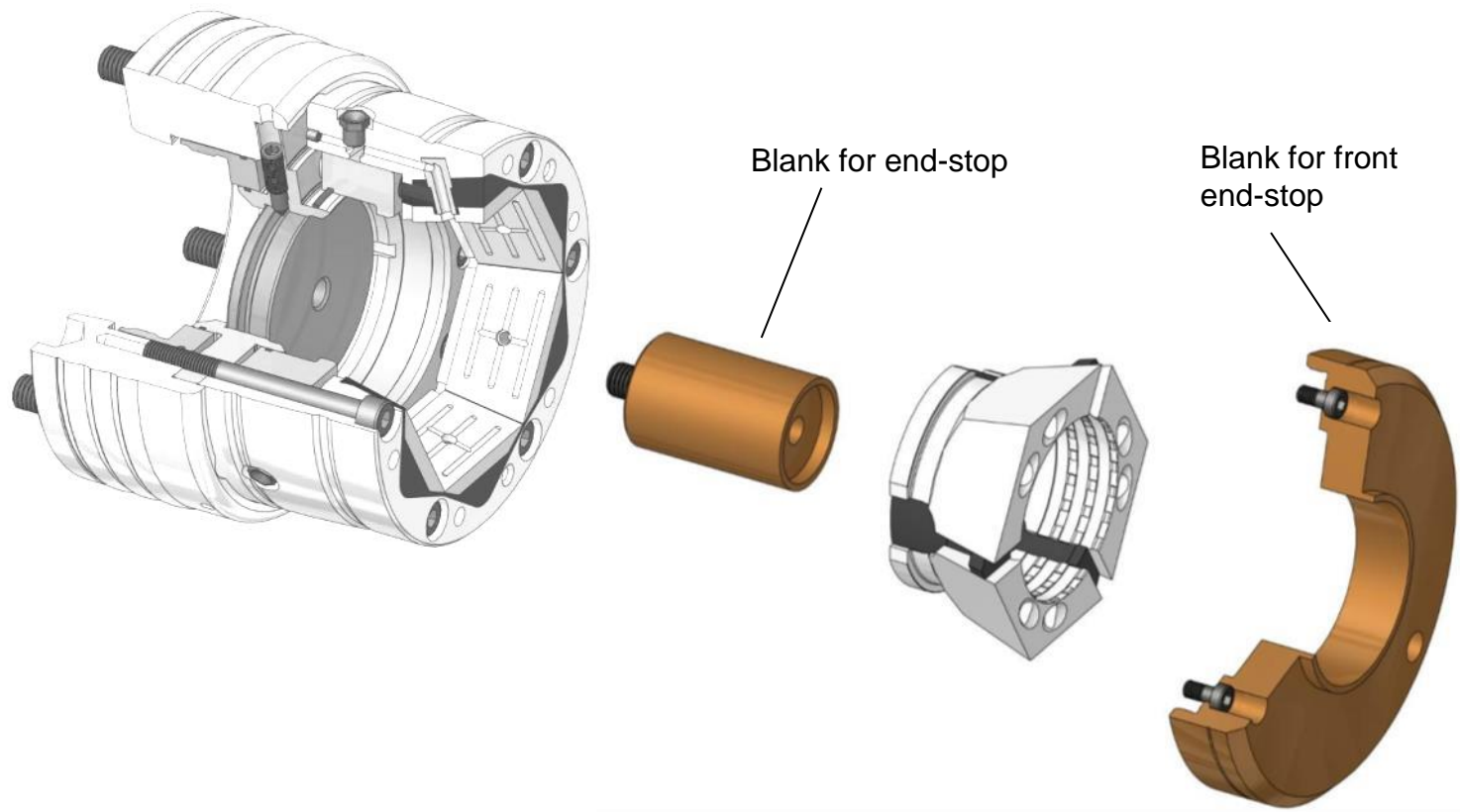


Jaw module
sizes 144 and 215

Accessory

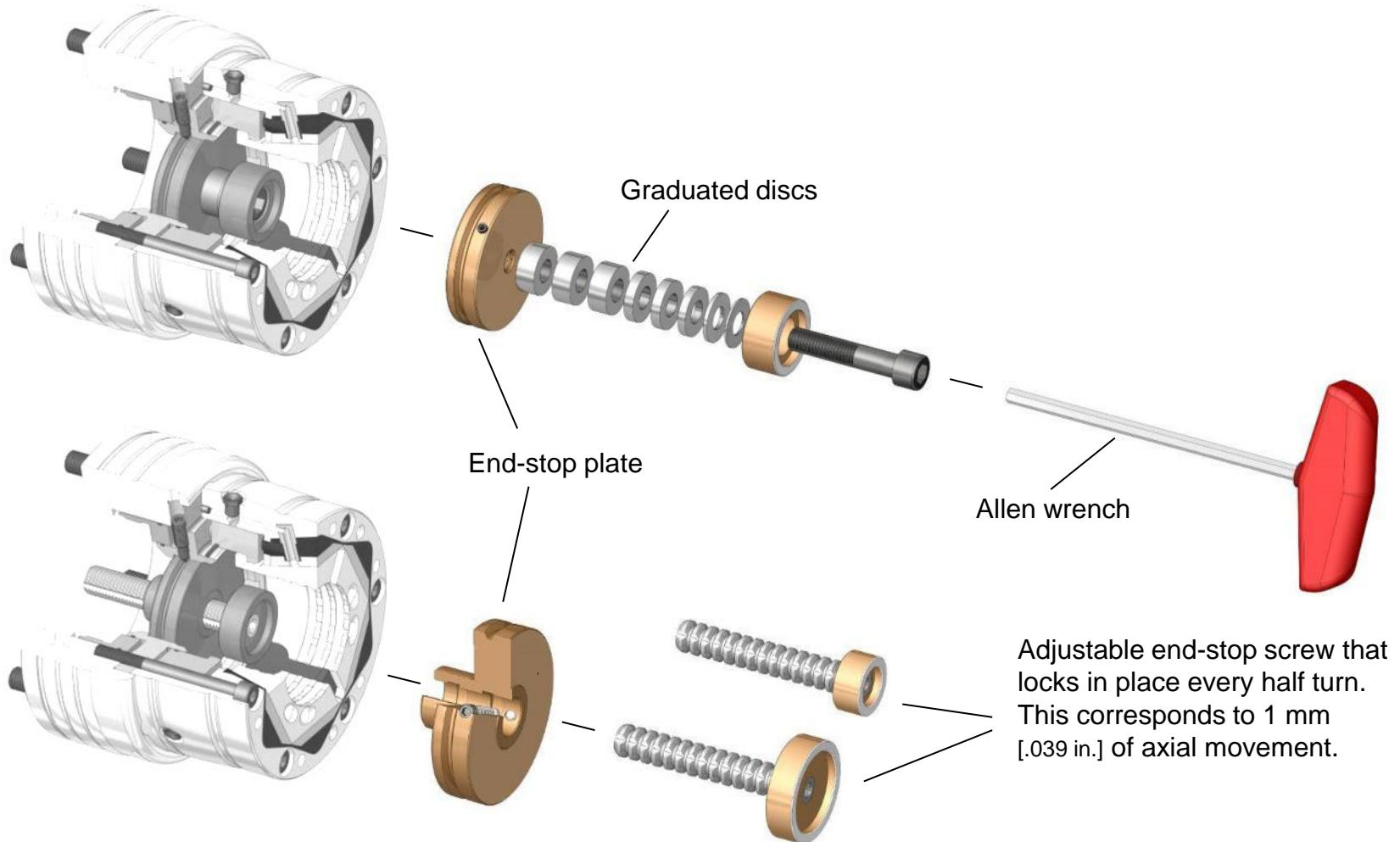
End-stop blanks:

- »Soft« [45 HRC] for customization



Accessory

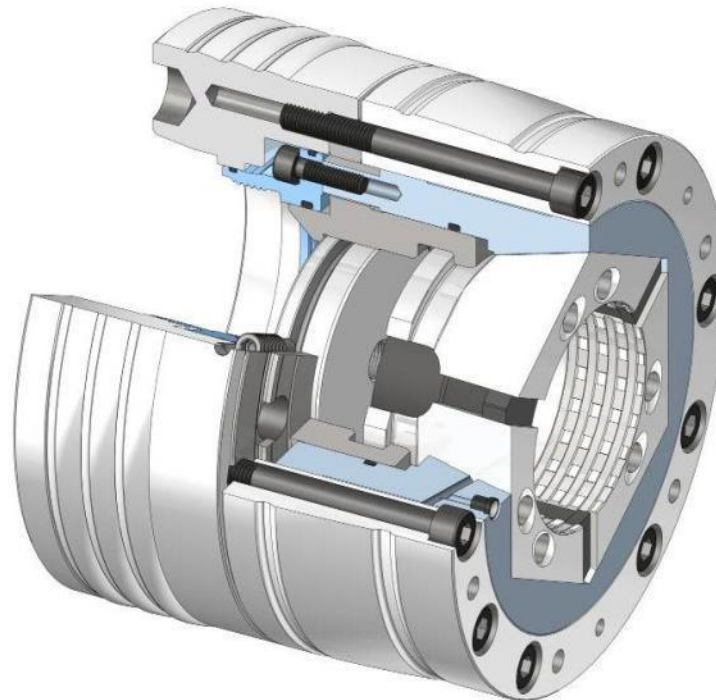
Adjustable end-stop systems:



TOPlus variant

TOPlus combi deadlength chuck:

- Only radial clamping, no axial movement
- Perfect for gripping short lengths
- Removable end-stop



TOPlus variant

TOPlus modular chuck:

- Perfect for bar machining
- Powerful pull-back clamping
- Full through-bore, no end-stop



And what can we do for you?