

SPANNTOP nova

chuck

SPANNTOP nova chuck

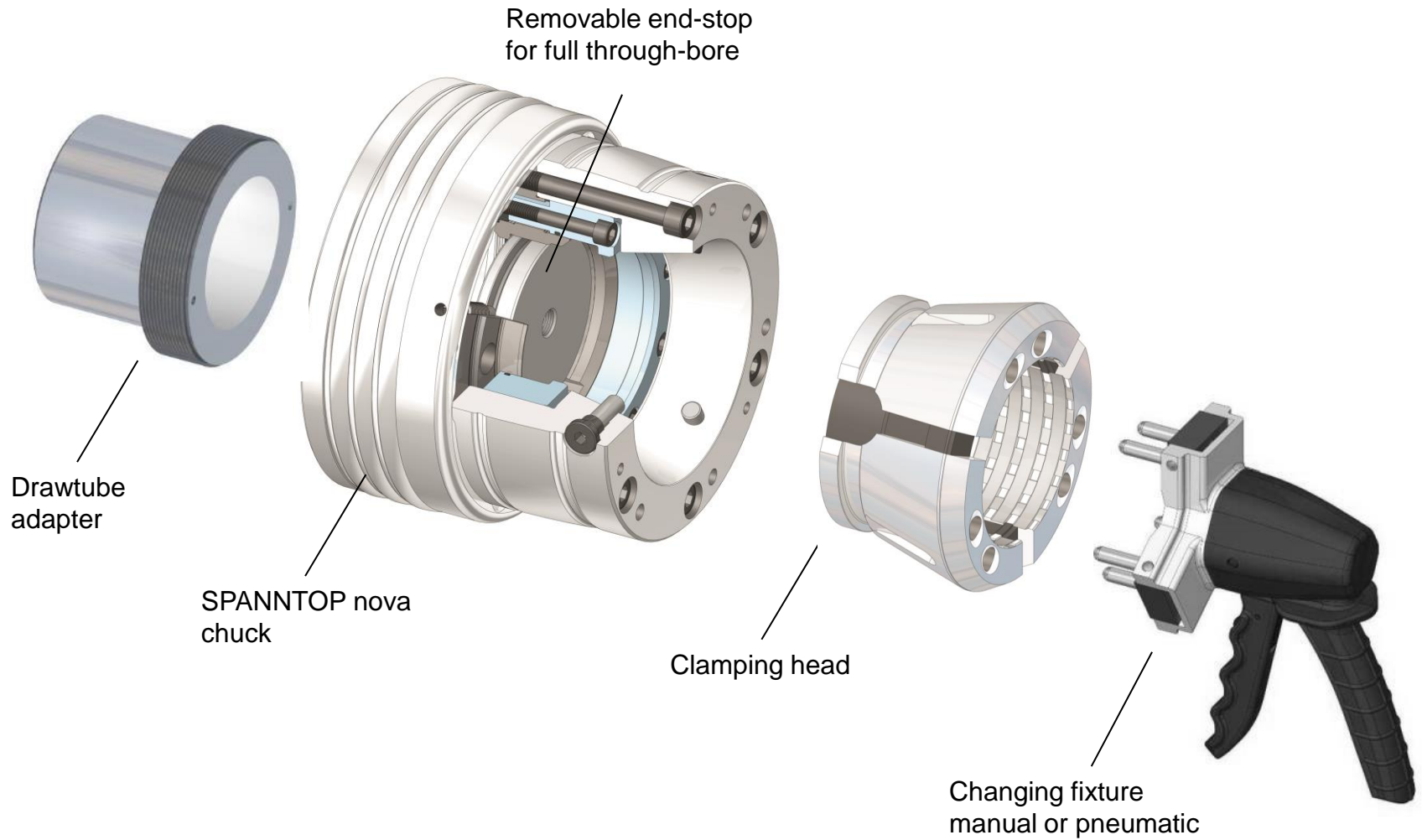
SPANNTOP nova combi pull-back chuck:

- Minimal workpiece deformation due to enclosed clamping
- Rigid clamping for high RPM
- Pull-back clamping
- Precise



SPANNTOP nova chuck

Buildup:



SPANNTOP nova chuck

Change-over in seconds:



Chuck ready for production



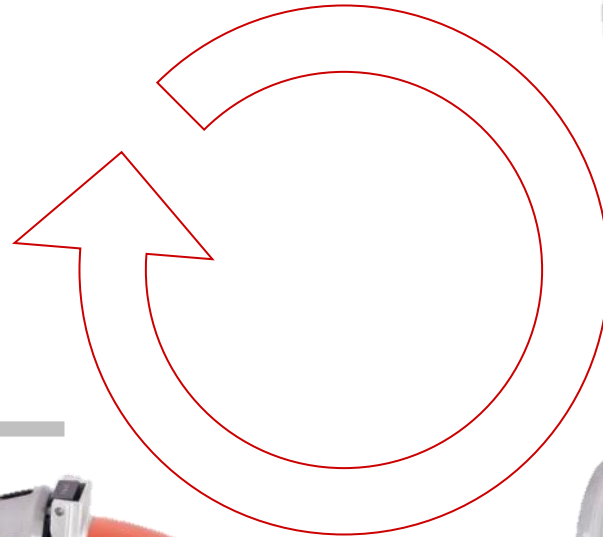
Remove clamping head with changing fixture



Insert clamping head



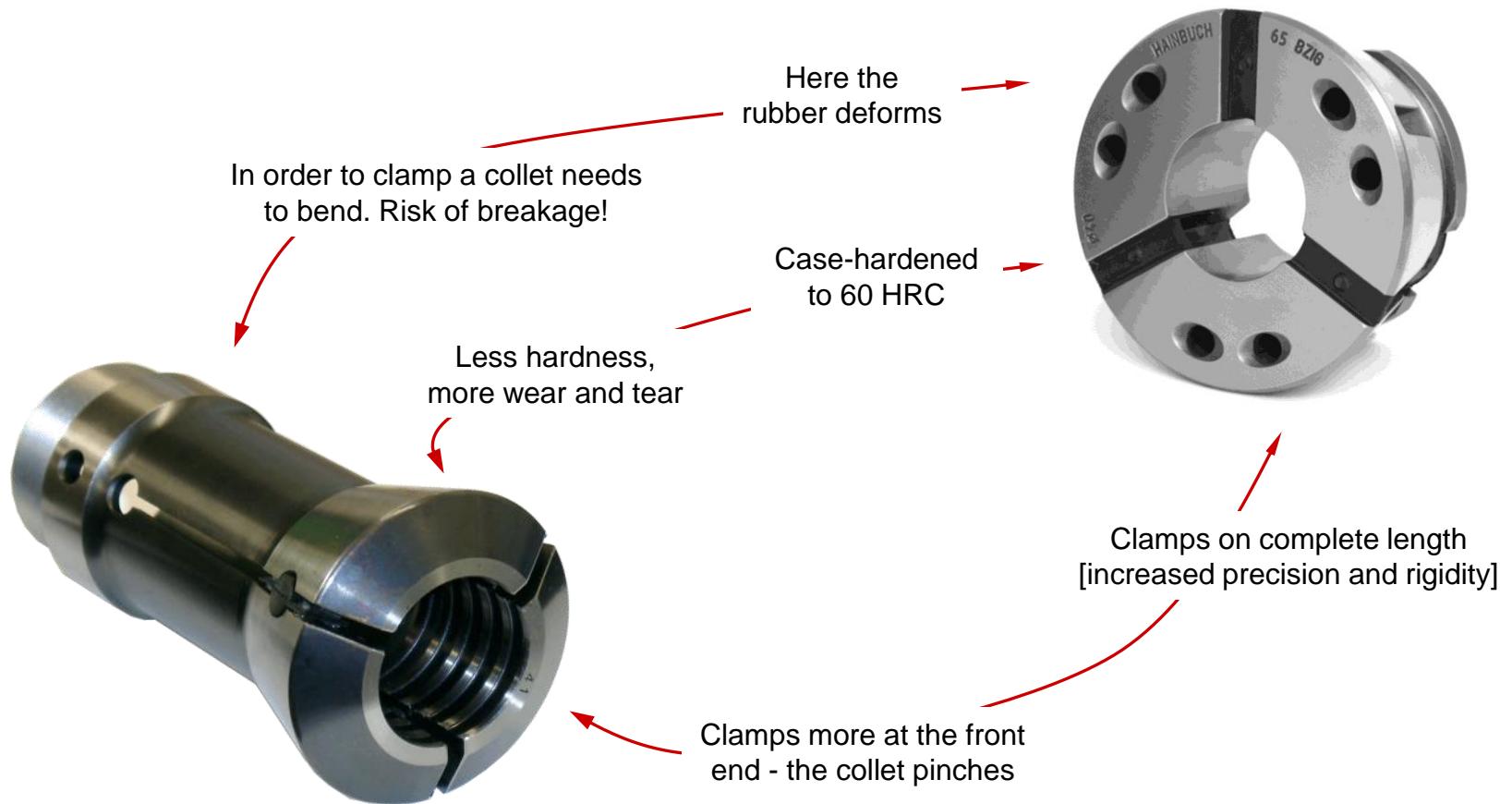
Empty chuck



SPANNTOP nova chuck

Comparison of clamping head and collet:

- Clamping without compromises!



SPANNTOP nova chuck

Reduced interference contour possible:

- SPANNTOP chucks may have an extra shoulder to further reduce the interference contour



SPANNTOP nova chuck

The HAINBUCH modular system:

- Change-over in less than 3 min to jaw clamping or ID clamping with mandrel
- No alignment necessary



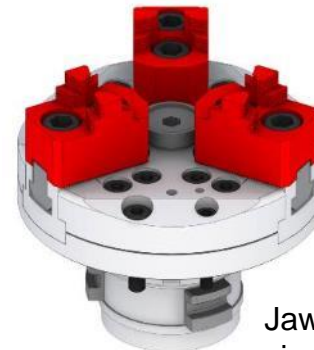
OD clamping with clamping head



Mandrel
MANDO Adapt T211



Mandrel
MANDO Adapt T212

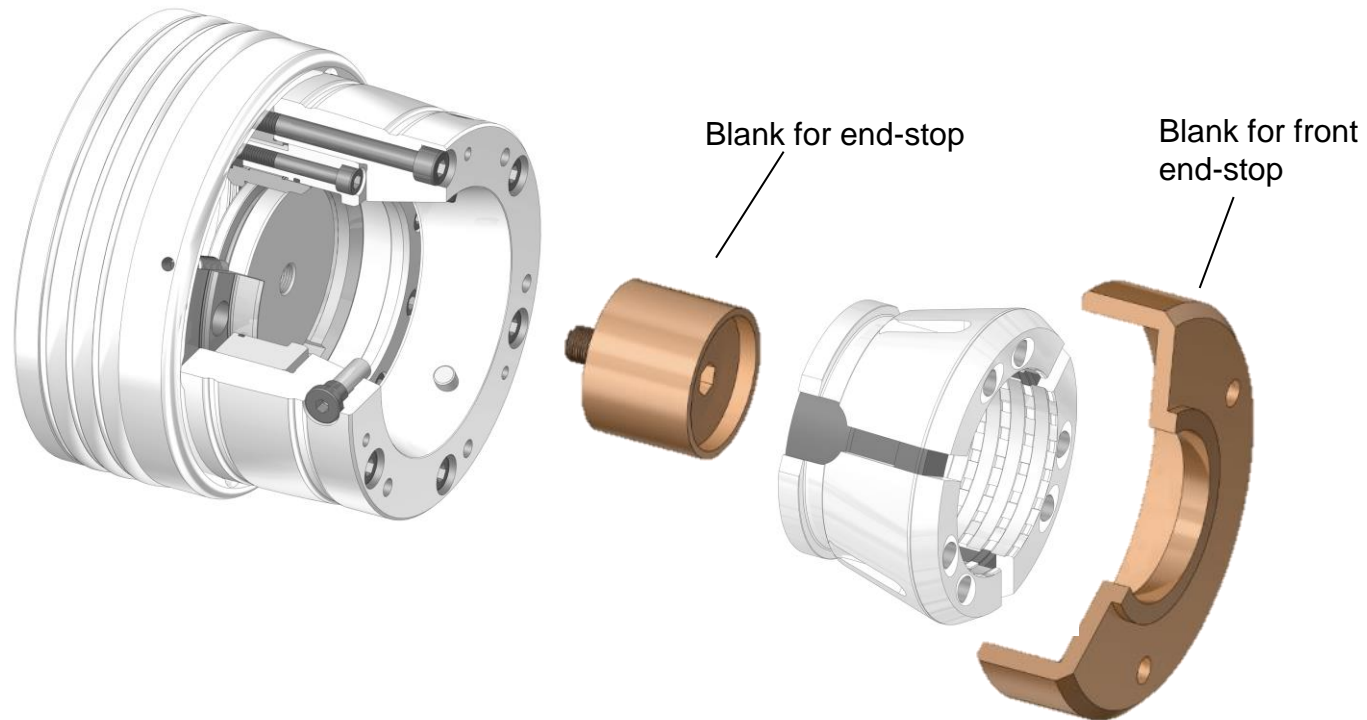


Jaw module
sizes 144 and 215

Accessory

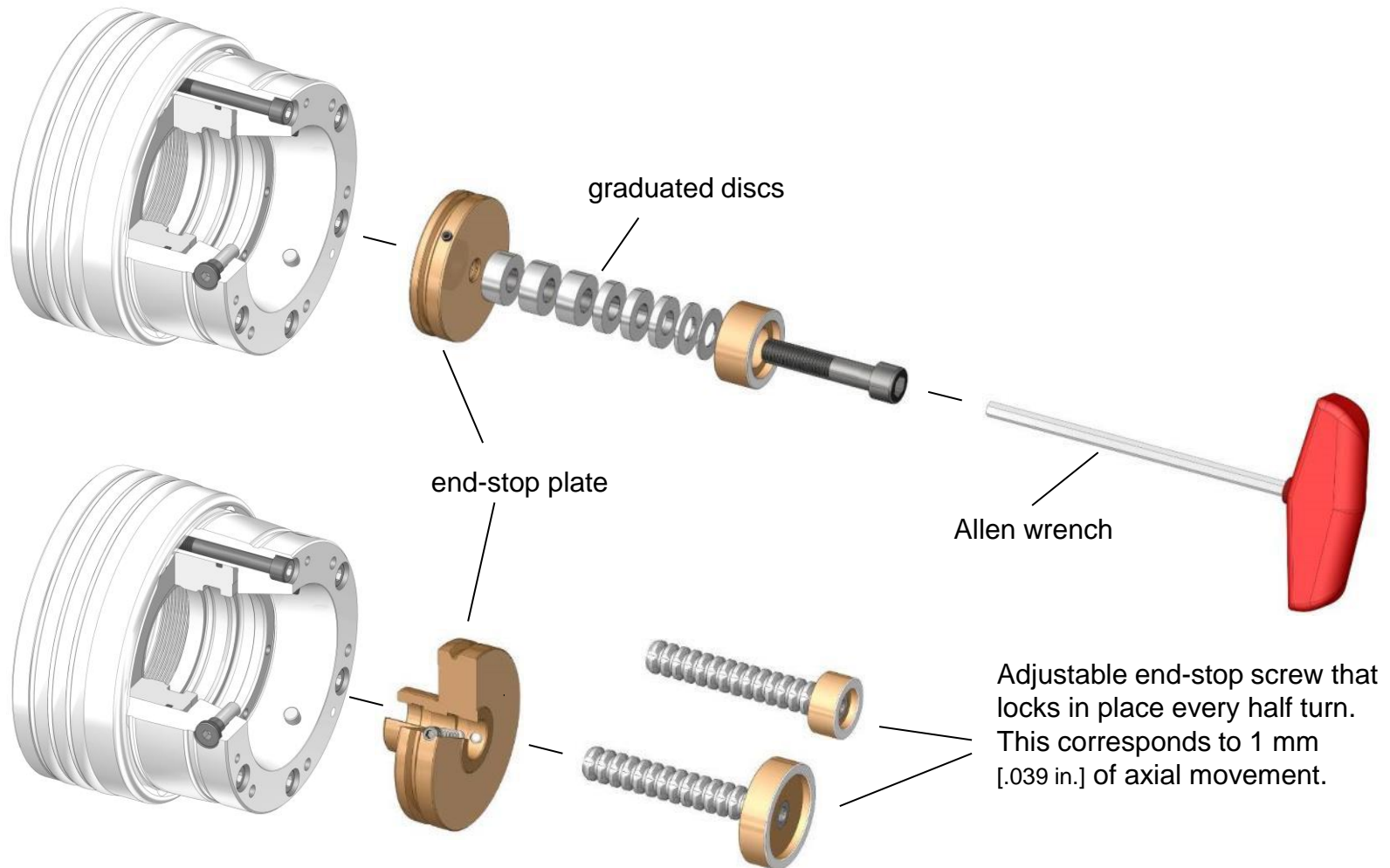
End-stop blanks:

- »Soft« [45 HRC] for customization



Accessory

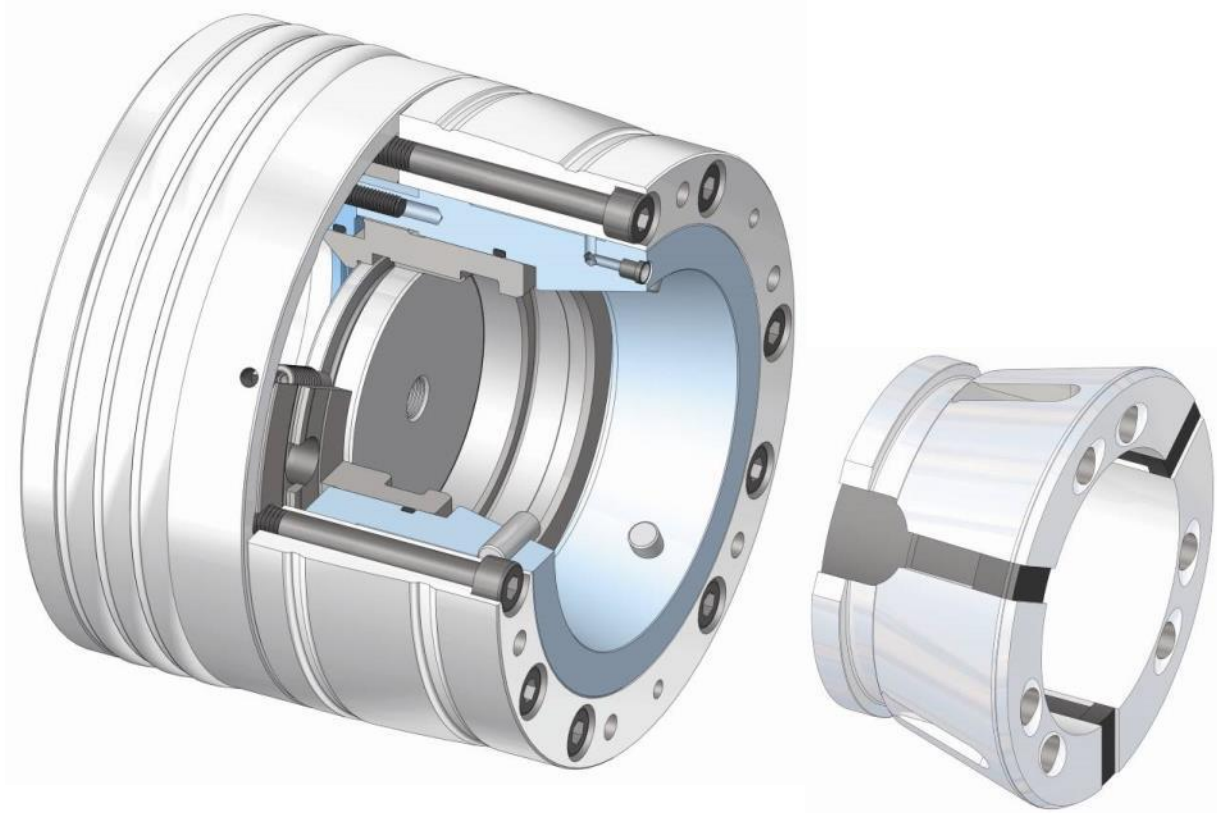
Adjustable end-stop systems:



SPANNTOP nova variant

SPANNTOP nova combi deadlength chuck:

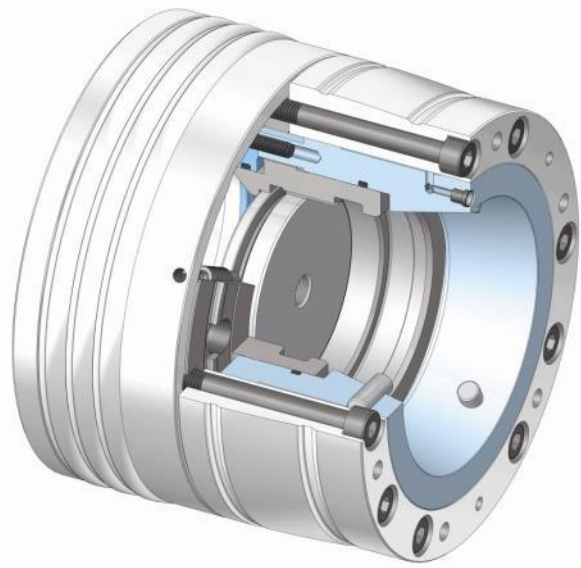
- Only radial clamping, no axial movement
- Perfect for gripping short lengths
- Removable end-stop



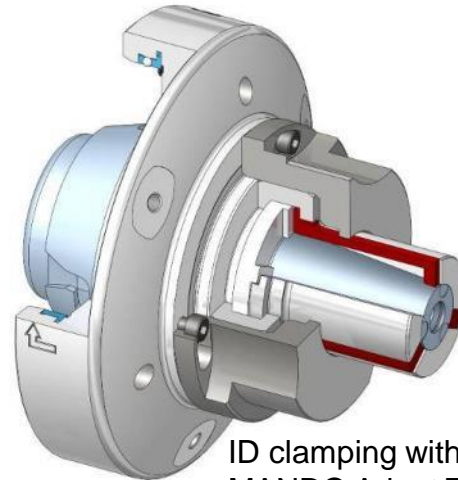
SPANNTOP nova variant

SPANNTOP nova combi deadlength chuck:

- Change-over in less than 3 min to deadlength ID clamping with mandrel
- No alignment necessary



OD clamping with clamping head

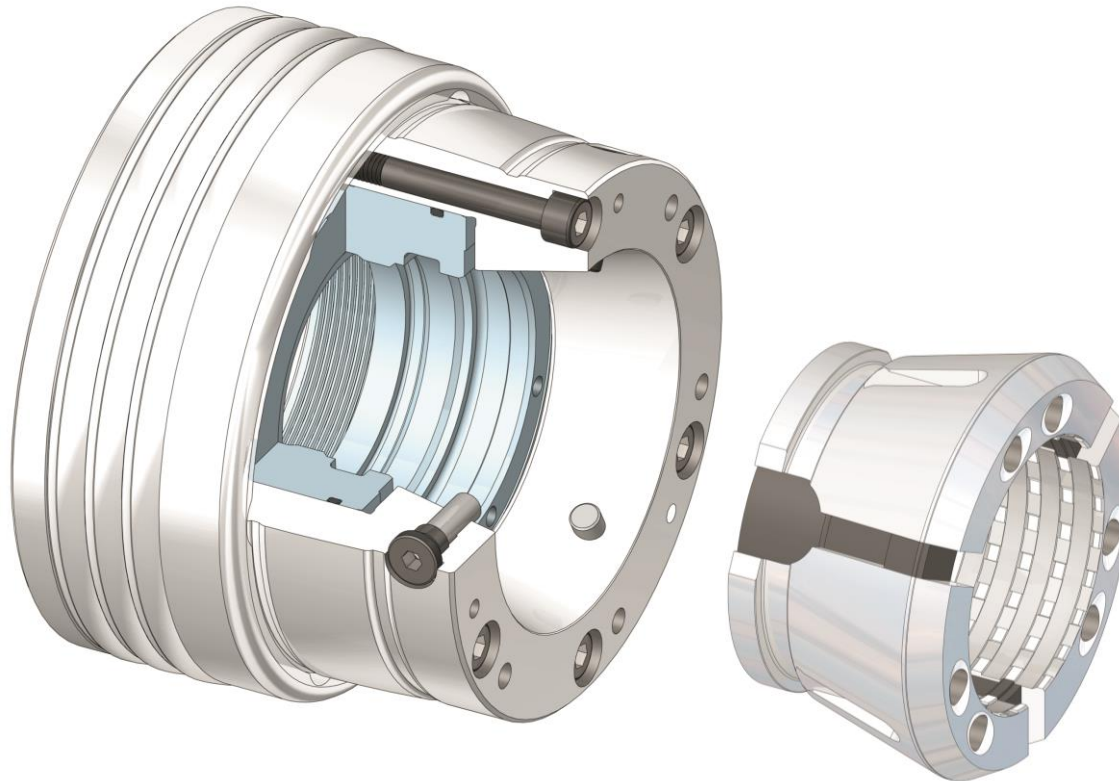


ID clamping with MANDO Adapt T812

SPANNTOP nova variant

SPANNTOP nova modular chuck:

- Perfect for bar machining
- Powerful pull-back clamping
- Full through-bore, no end-stop



And what can we do for you?