

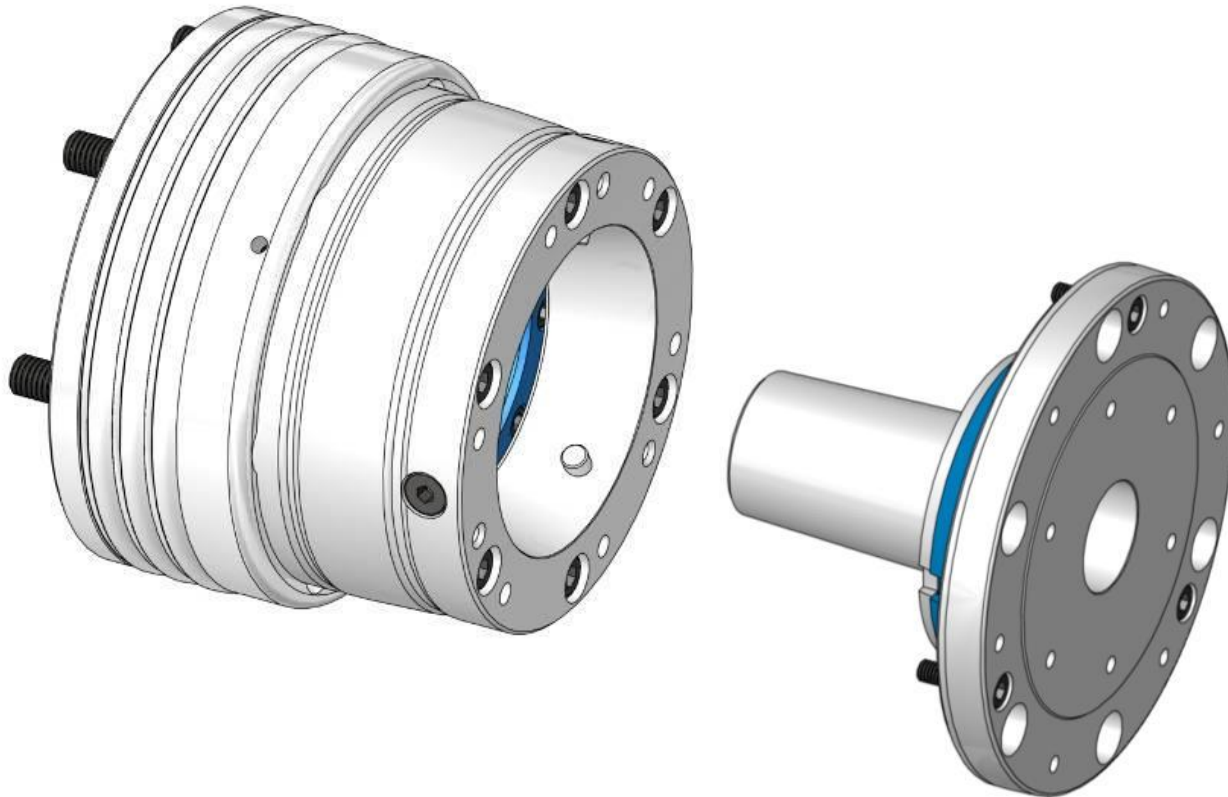
Morse taper adapt

flexible adapt

Adaptions for chucks

Maximum flexibility – short change-over time:

- Morse taper adaption for chucks [size 65]
- No alignment necessary

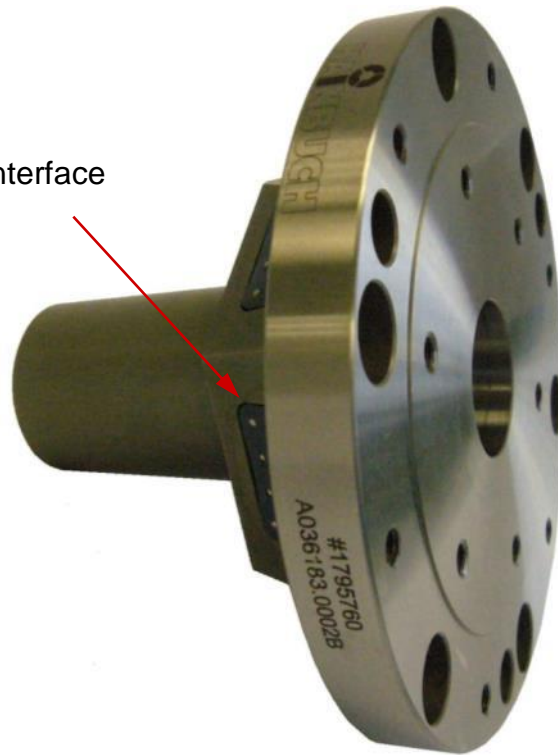


Adaptions for chucks

Maximum flexibility – short change-over time:

- For round or hex shaped clamping element receptions
- Fits SPANNTOP nova or TOPlus chucks

CENTREX interface



And what can we do for you?