

MANDO Adapt

mandrel-in-clamping-device

MANDO Adapt

Mandrel-in-clamping-device

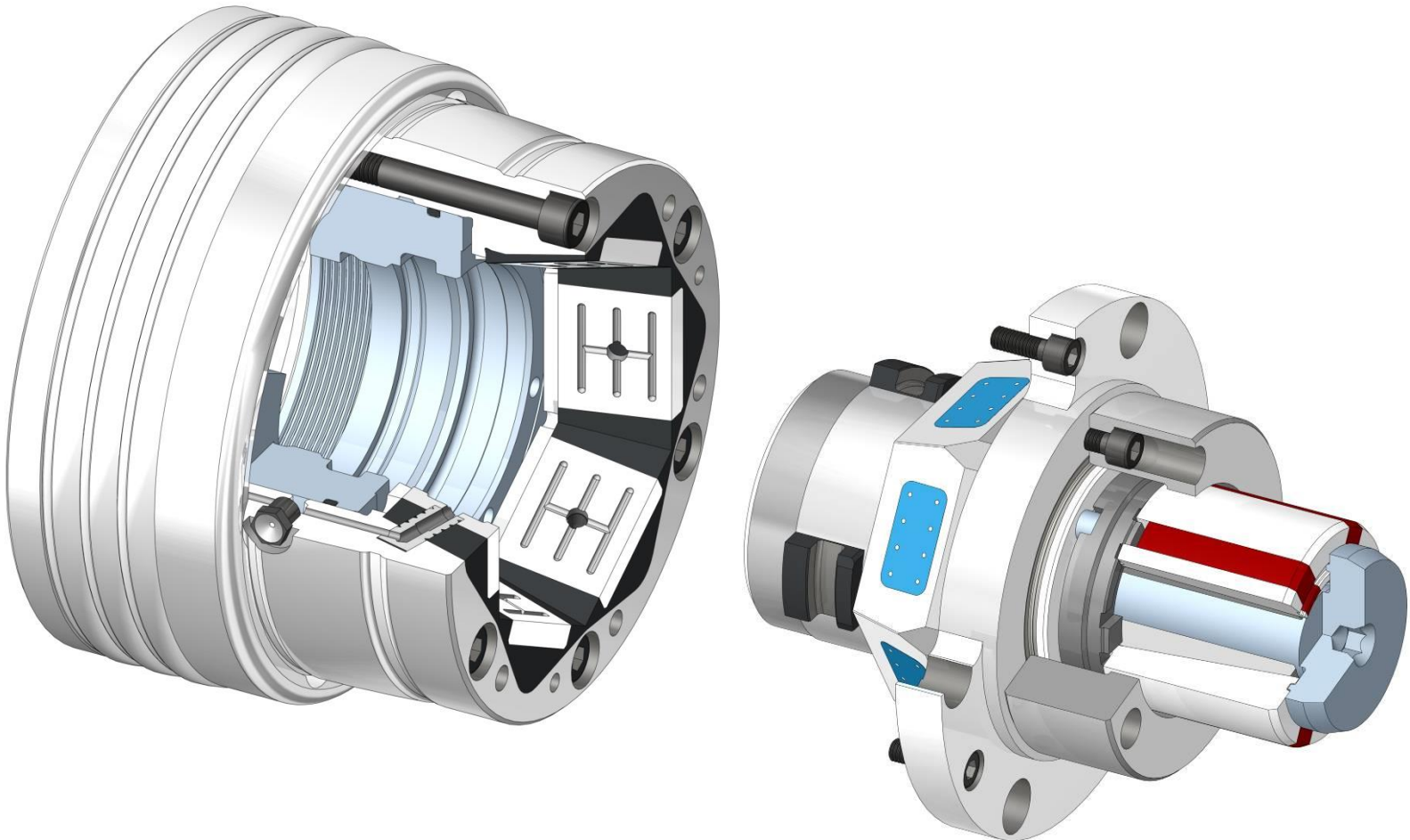
- Specialized clamping technology for I.D. clamping
- Adaptable with precise CENTREX interface
- No alignment necessary
- Mandrels T211 and T212
[with and without draw bolt]



MANDO Adapt

Mandrel-in-clamping-device T211 with draw bolt:

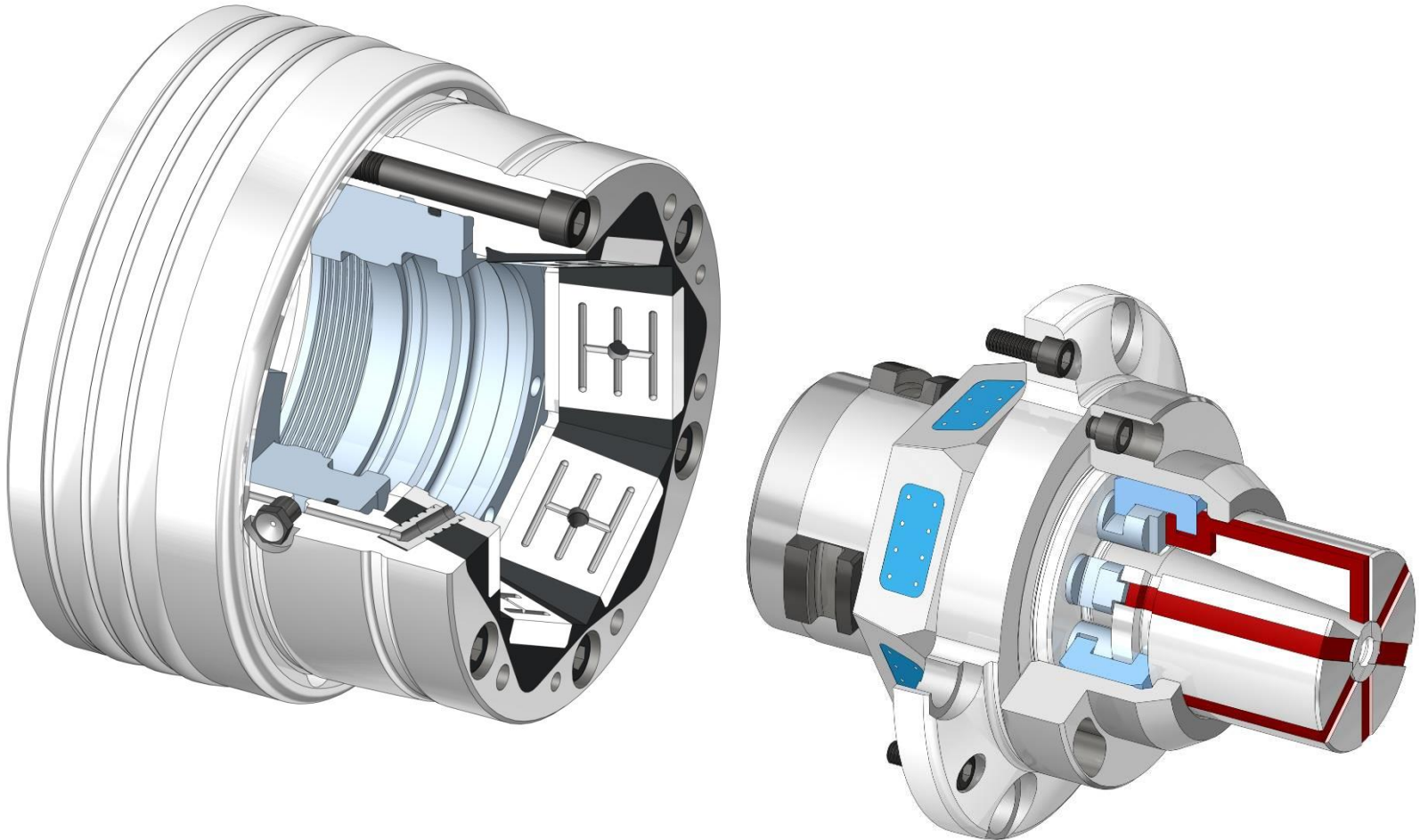
- The chuck remains on the machine



MANDO Adapt

Mandrel-in-clamping-device T212 without draw bolt:

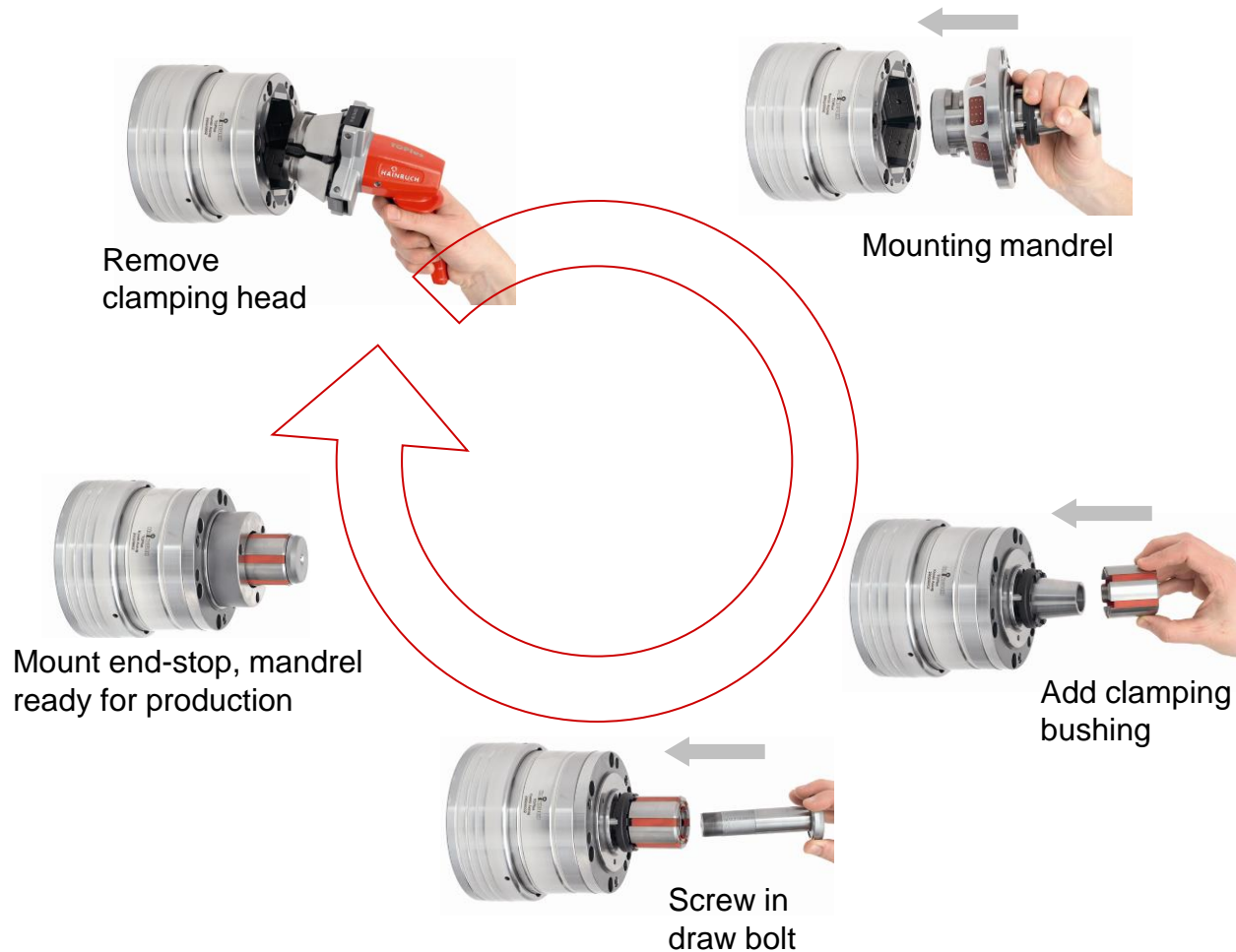
- The chuck remains on the machine



MANDO Adapt

Change-over from clamping head to mandrel:

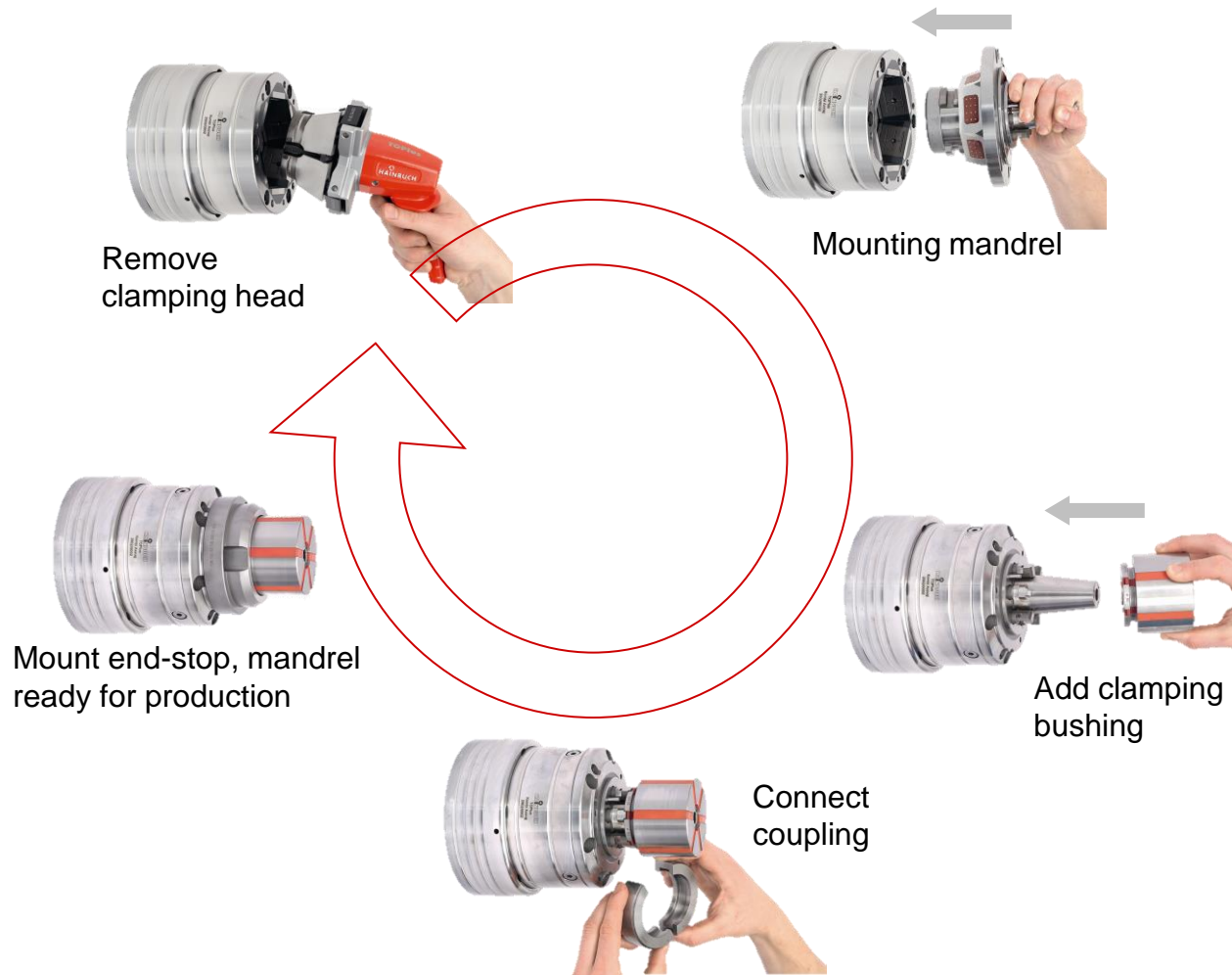
- In less than 2 minutes



MANDO Adapt

Change-over from clamping head to mandrel:

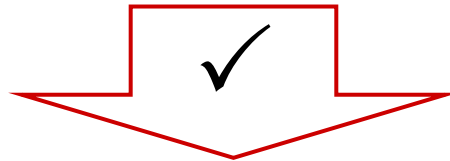
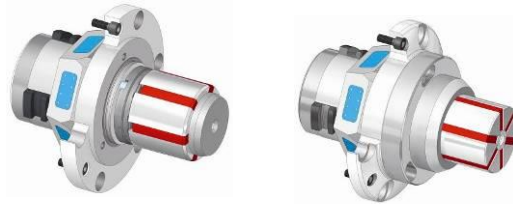
- In less than 2 minutes



MANDO Adapt

All-purpose modular system for all pull-back chucks:

- Round and hexagonal geometry



TOROK



MANOK plus



TOPlus



SPANNTOP nova

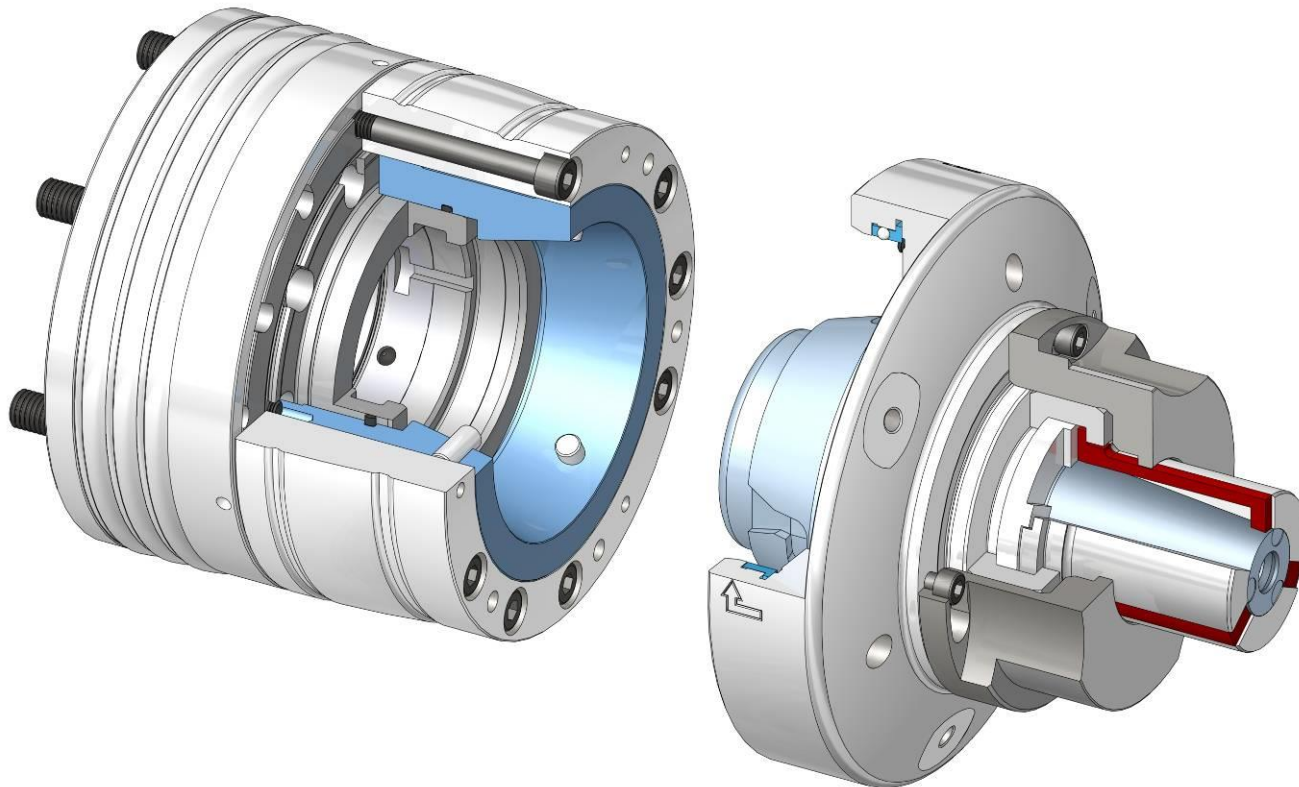


HYDROK

MANDO Adapt

Deadlength mandrel-in-clamping-device T812:

- The deadlength mandrel for SPANNTOP nova deadlength chucks
- Only radial clamping [without pull-back effect]



And what can we do for you?