

Jaw module

jaw clamping with a HAINBUCH chuck

Jaw module

Always the right solution

- Jaw clamping with a HAINBUCH chuck or stationary chuck
- Enlarged clamping range of the basic clamping device
- Machining between the jaws is possible [milling or drilling]
- Can be used rotating [under RPM] and for stationary applications
- Ideal lubrication and resistant to dirt due to new lubricating system
- Comfortable assembly mechanism
- Deadlength clamping
- Available in two sizes
- Optimized interference contour



Jaw module

Enlarged clamping range of the basic clamping device

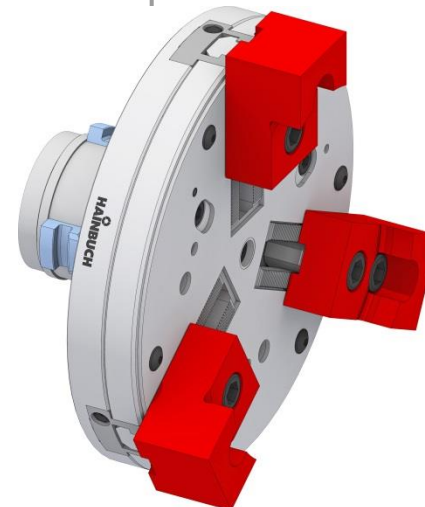


SPANNTOP mini
Size 65



Clamping head
Size 65

Max. Clamp.-Ø: 78 mm



Jaw module
Size 65/ 215

Max. Clamp.-Ø: 209 mm

Jaw module

Fitting clamping devices



TOPlus
TOPlus mini



HYDROK



SPANNTOP nova
SPANNTOP mini



MANOK plus



TOROK