

HYDROK 32 + 40

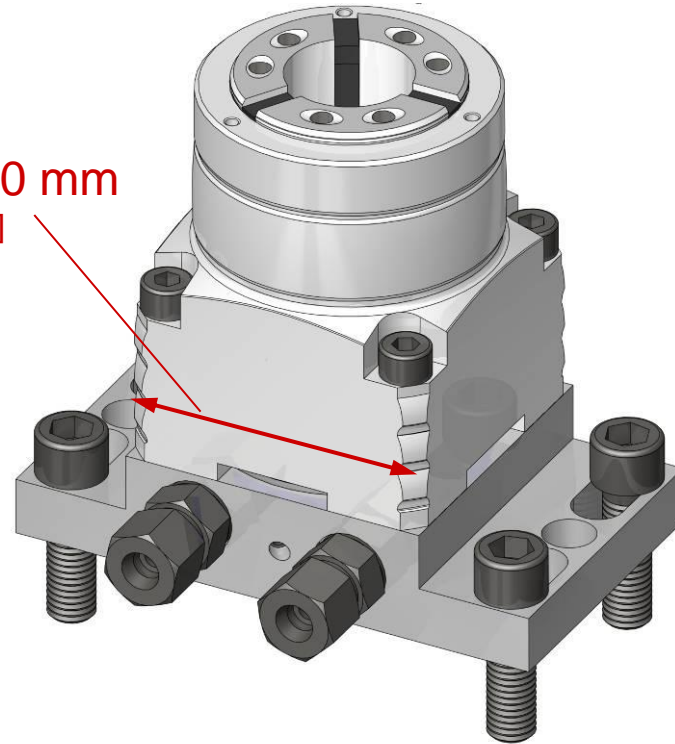
the small stationary chucks

HYDROK size 32 RD

Hydraulic/pneumatic actuated stationary chuck:

- Very small frame and interference contour
- Clamping force up to 70 kN [15.7 kipf]
- Pull-back clamping
- Precise

less than 80 mm
[3.15 in.]



HYDROK size 40 SE

Hydraulic/pneumatic actuated stationary chuck:

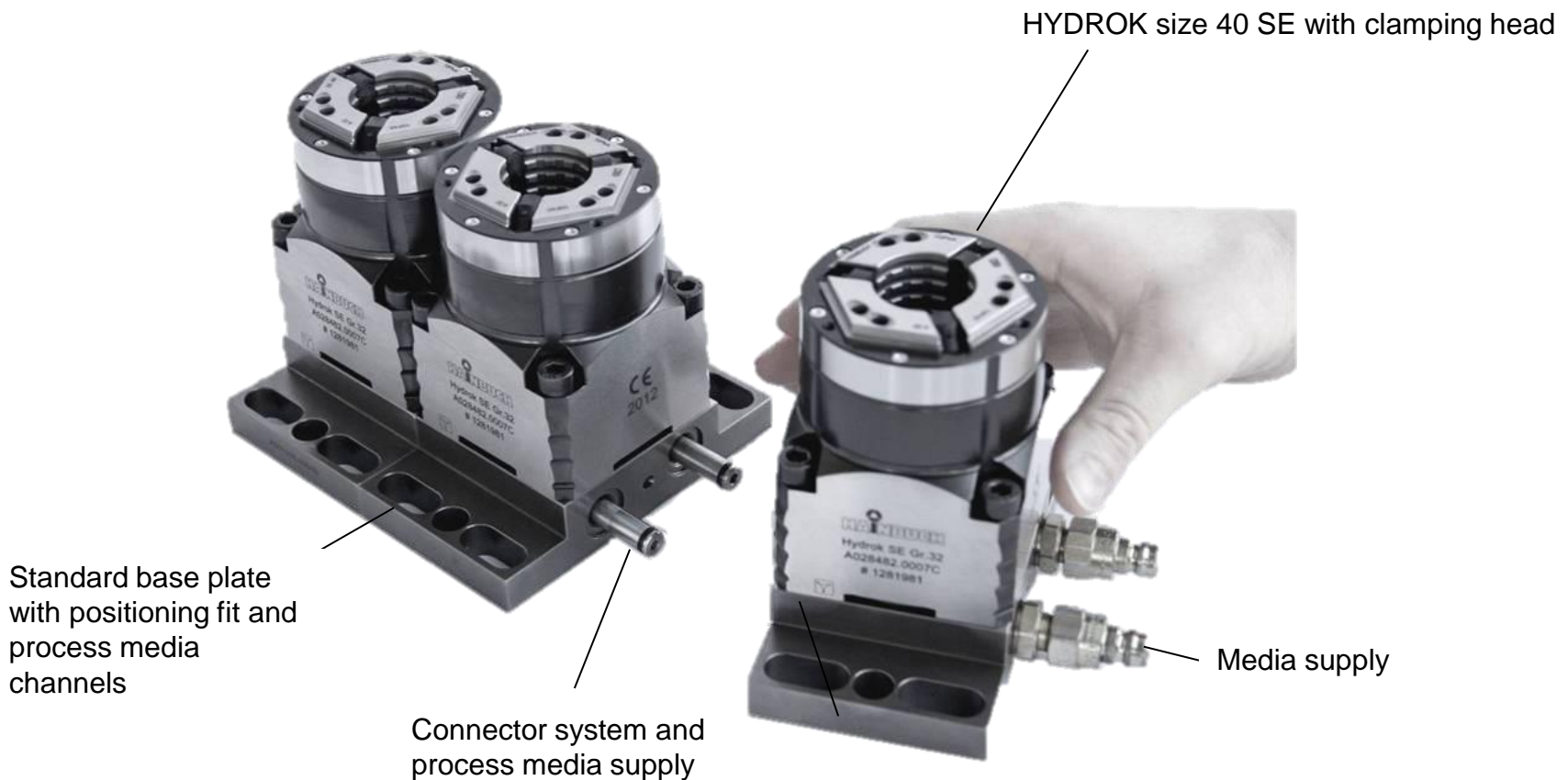
- Pull-back clamping
- Clamping force up to 85 kN with 85 bar [19 kipf with 1.23 ksi]
- 5 mm higher as size 32 RD, other dimensions identical
- Increased process reliability



HYDROK size 32 and 40

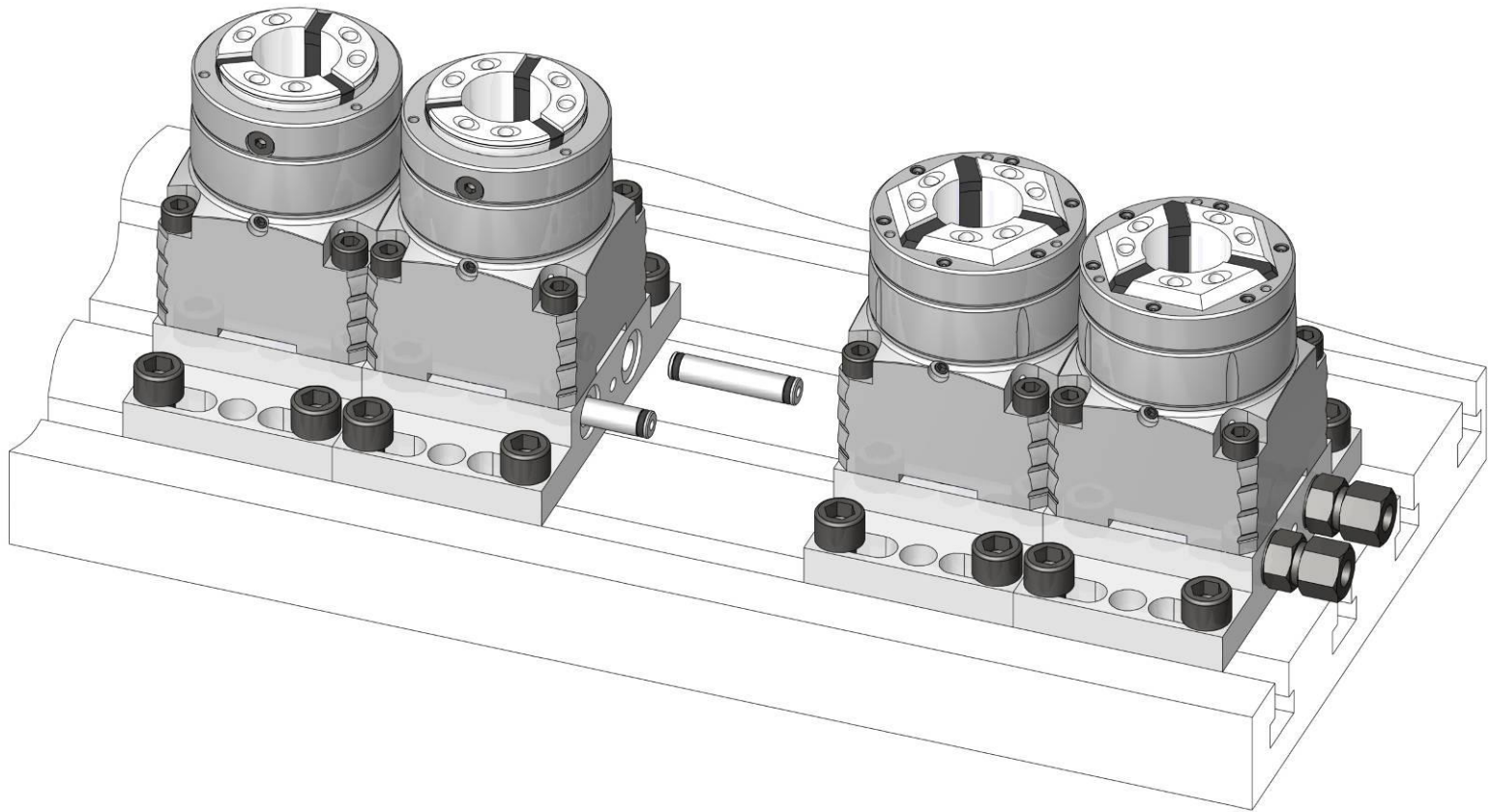
Ideal for multi-clampings:

- Standard base plates with connector system
- Simple assembly



HYDROK

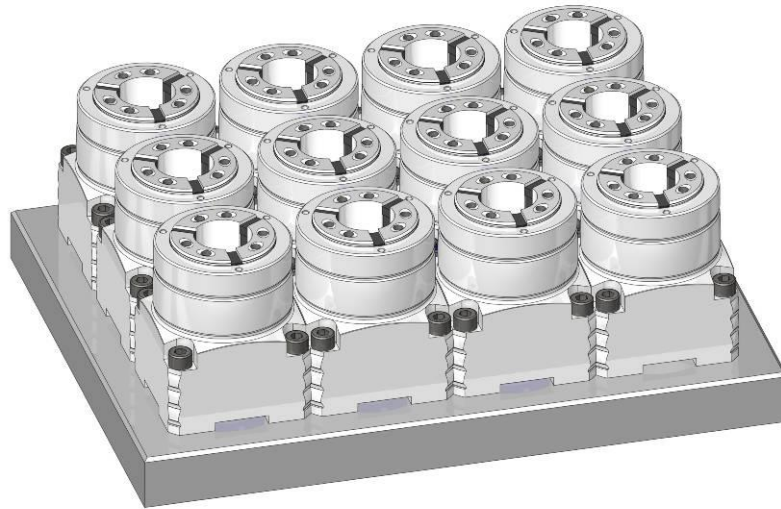
Variants: Size 32 RD [round] and 40 SE [hexagonal]



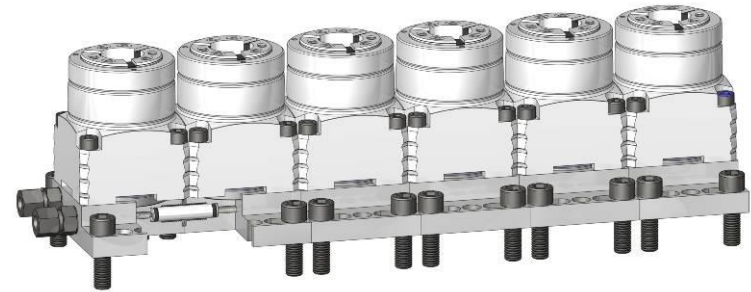
HYDROK

Ideal for multiple clamping:

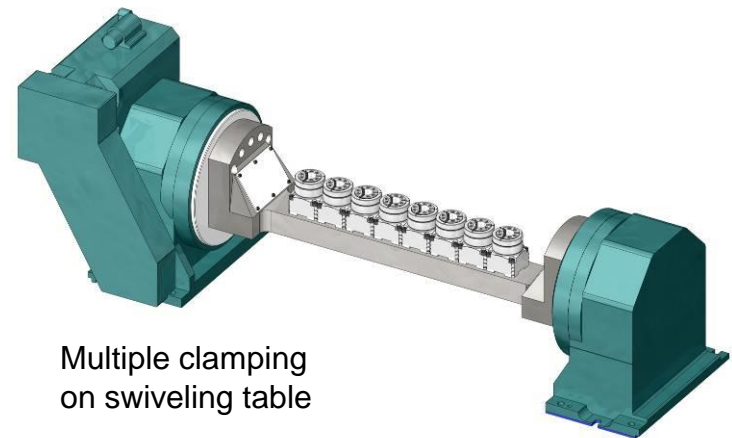
■ Examples



Multiple clamping on special base plate



Multiple clamping with modular system

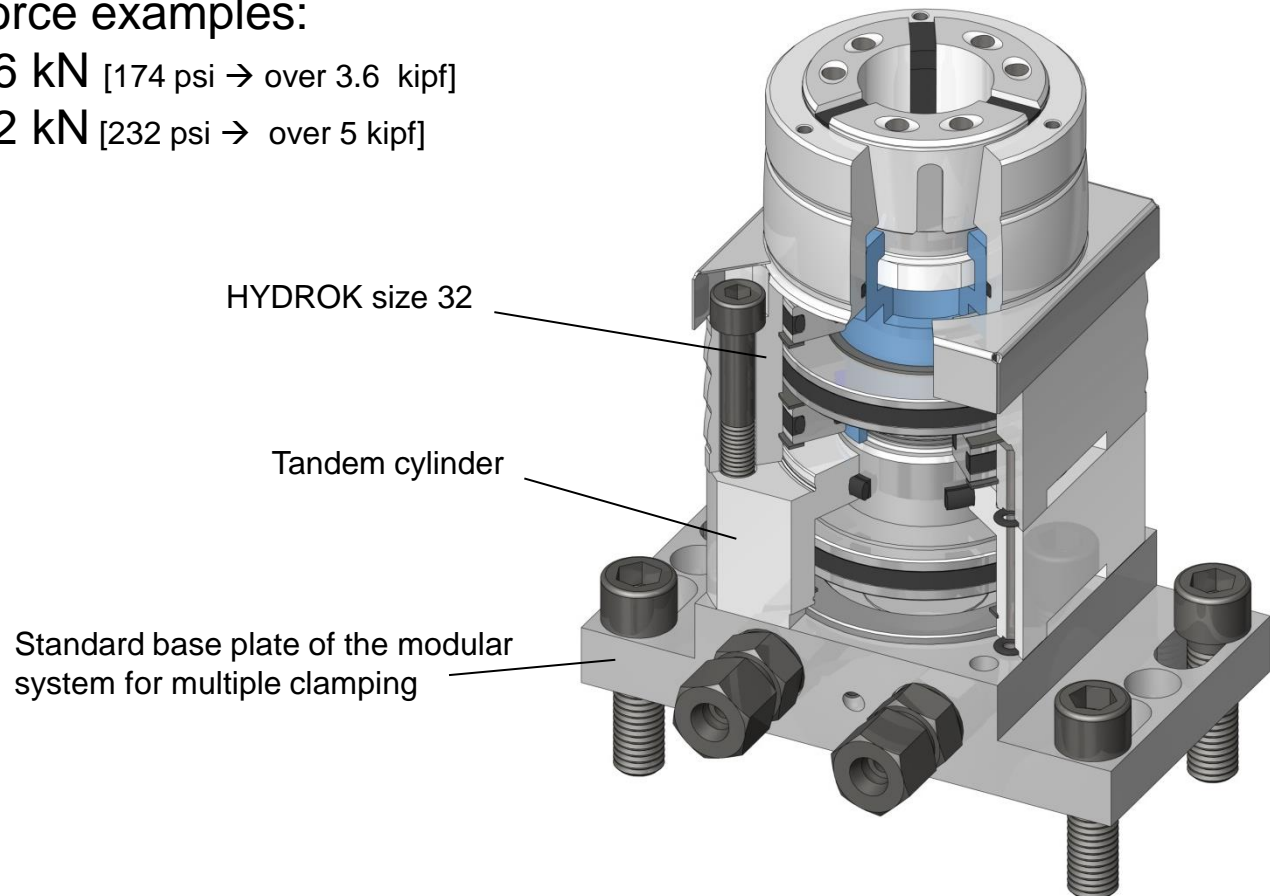


Multiple clamping on swiveling table

HYDROK

Tandem cylinder for operating with low pressure:

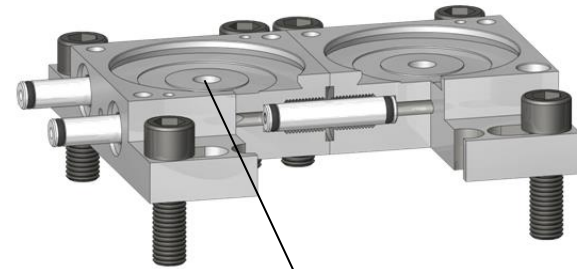
- Use of tandem cylinder doubles the clamping force
- Clamping force examples:
 - 12 bar → 16 kN [174 psi → over 3.6 kipf]
 - 16 bar → 22 kN [232 psi → over 5 kipf]



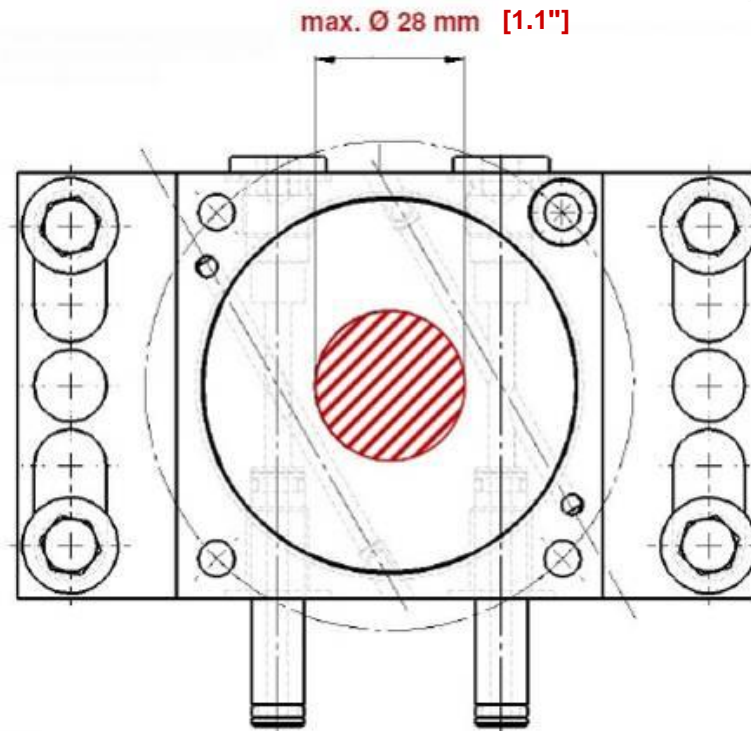
HYDROK

Boring up of base plate possible:

- Material properties:
Case hardened to 60 HRC
Material: 16MnCr5



Thread M12 can be bored up if necessary.



And what can we do for you?