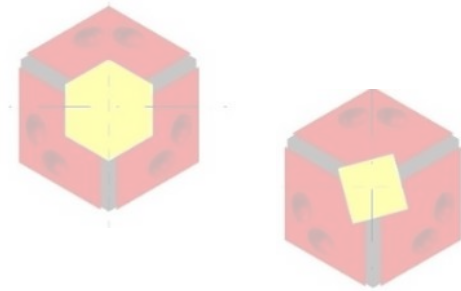


# Eccentric chuck

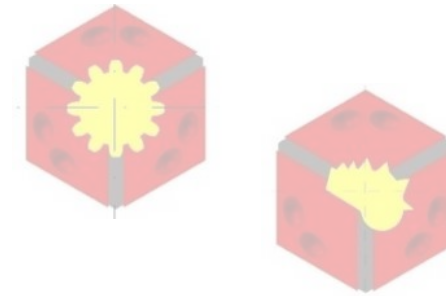
concentric and eccentric machining

# The most simple eccentric clamping

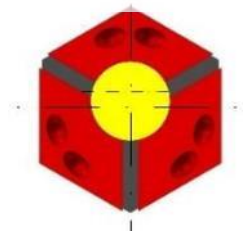
A special clamping head in a standard chuck:



Multi-sided clamping bores



Special geometries



Round eccentric bore

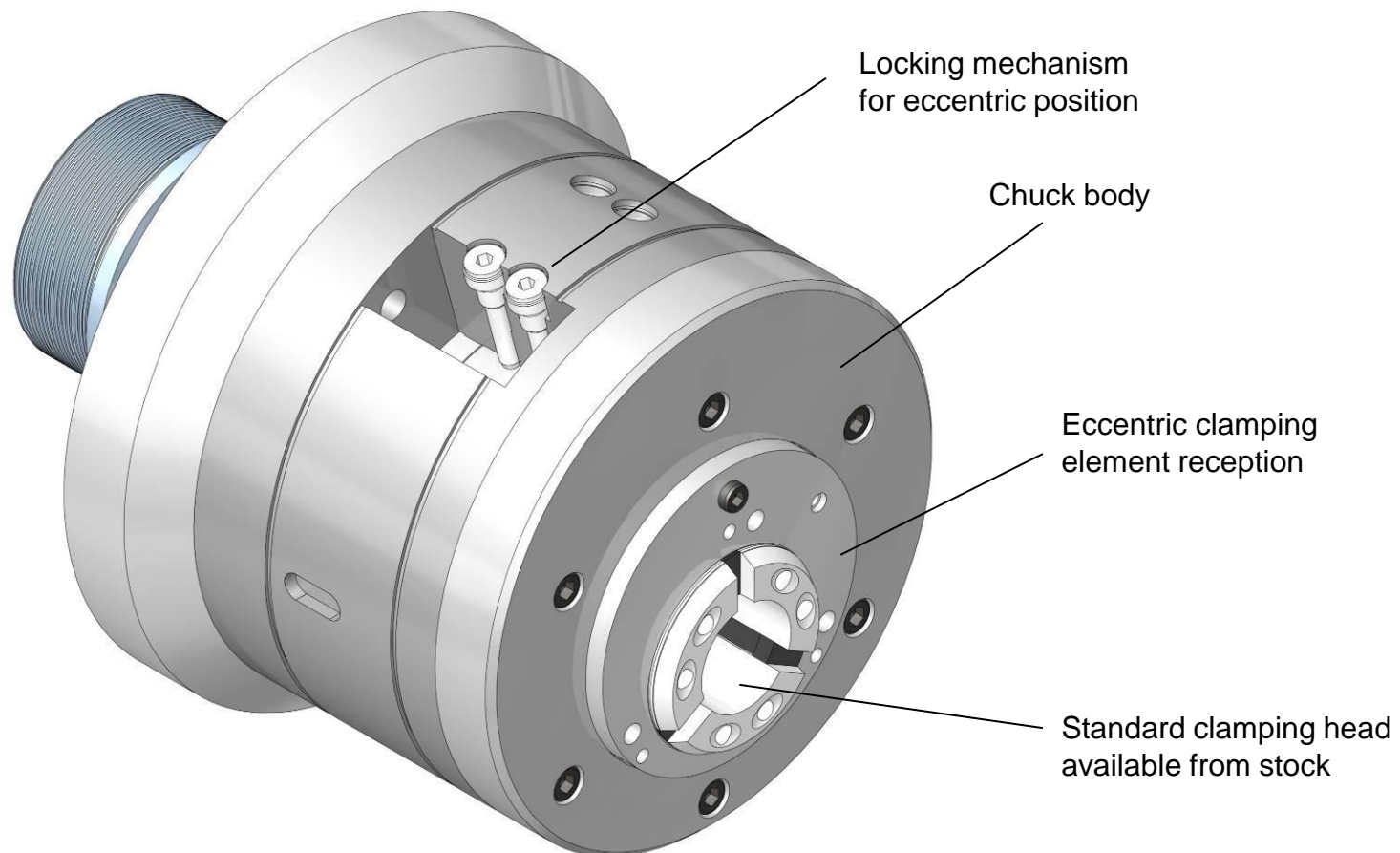


Smooth or serrated bores

# Eccentric chuck

## Chuck with pre-assigned eccentricities:

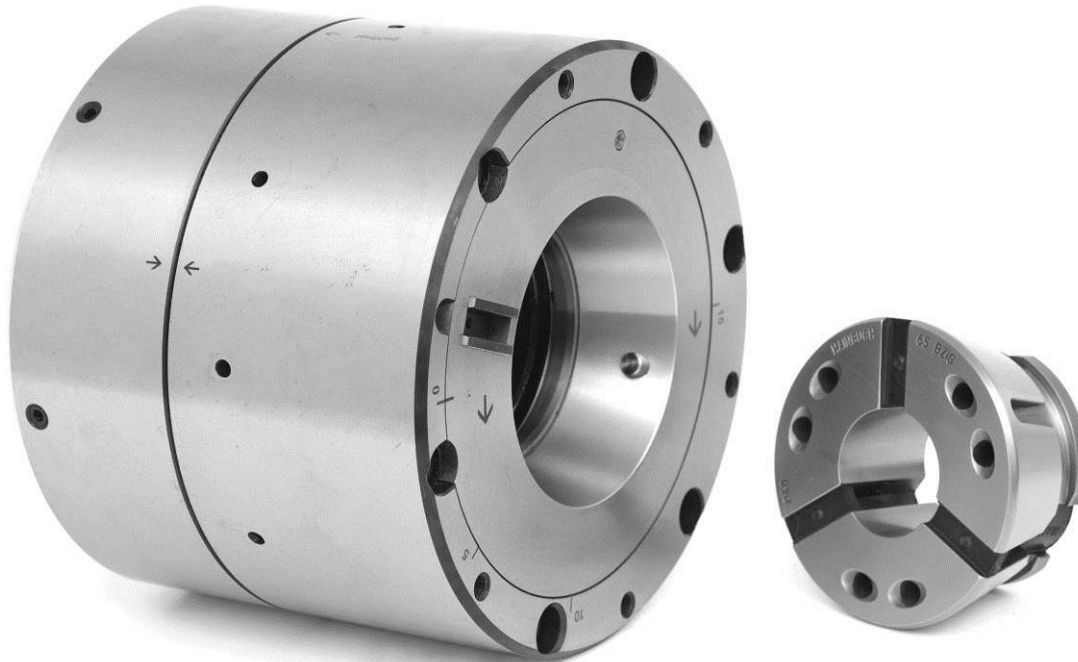
- Suits a limited number recurring eccentric measures



# Eccentric chuck

Special chuck for eccentric machining:

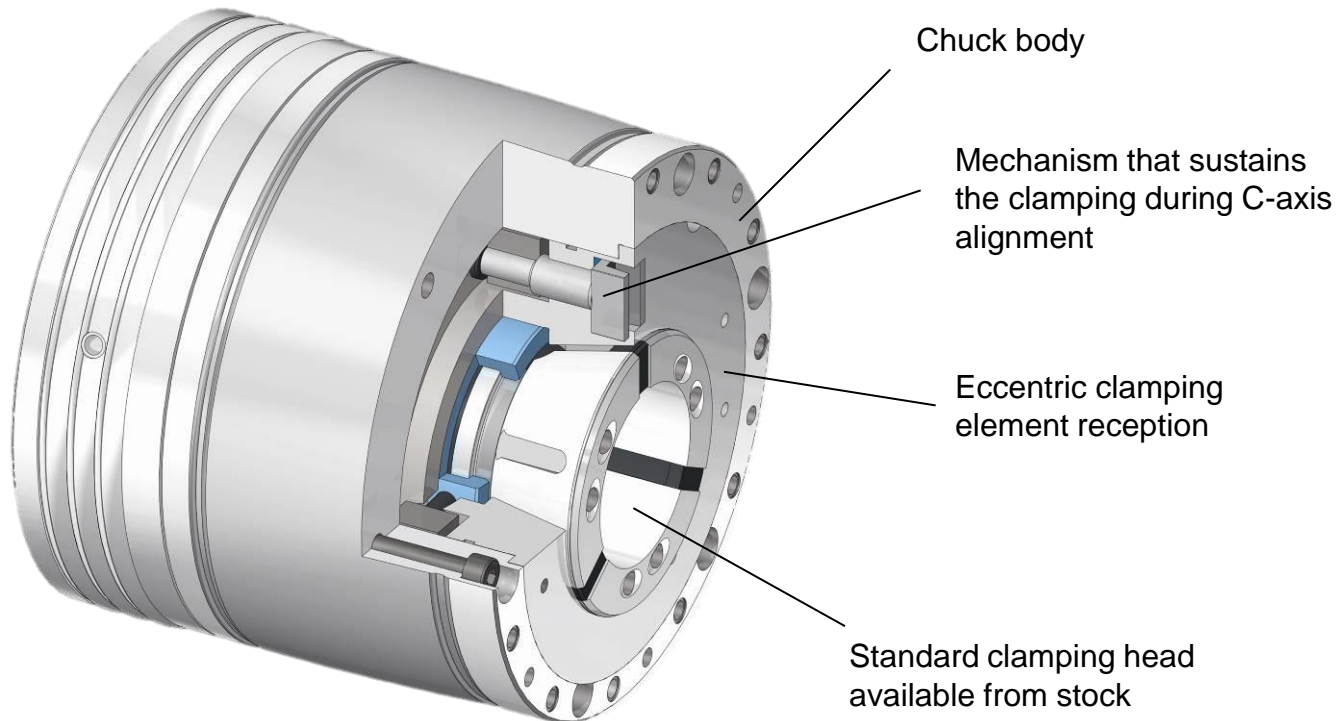
- Centric and eccentric machining in one set-up
- Continuously adjustable eccentricity
- Use of standard clamping heads



# Eccentric chuck

## Function:

- C-axis of machine rotates eccentric element
- Automatic adjustment during operation cycle
- Applicable on main- and sub-spindle



And what can we do for you?