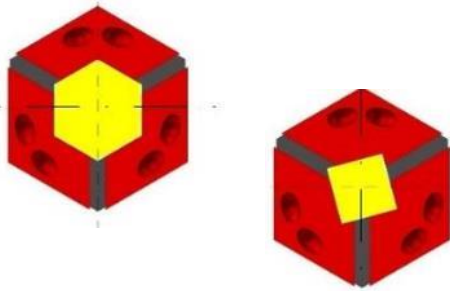


Clamping elements

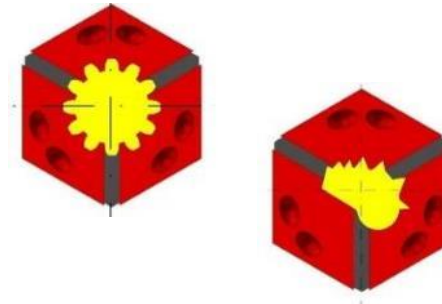
special solutions and options

Clamping profiles

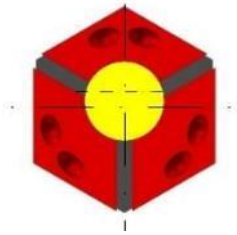
Many possibilities:



Multi-sided clamping bores



Special geometries



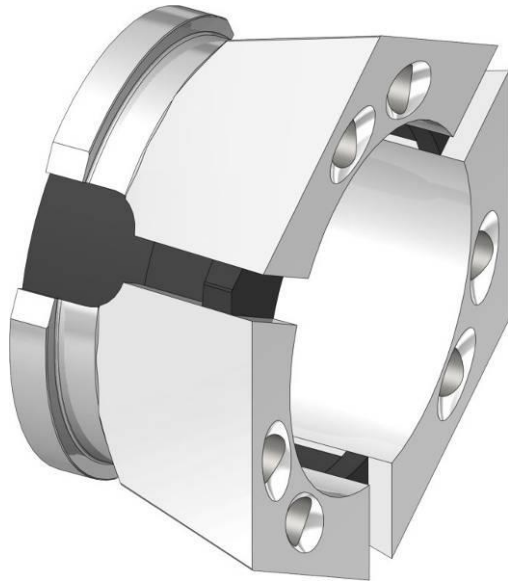
Round eccentric bore



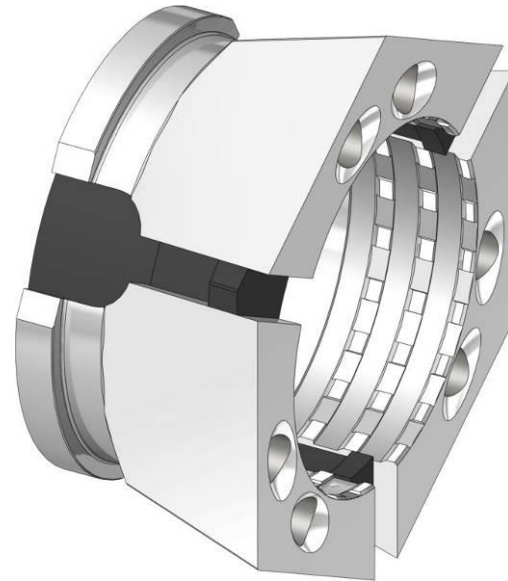
Smooth or serrated bores

Clamping profiles

Many possibilities:



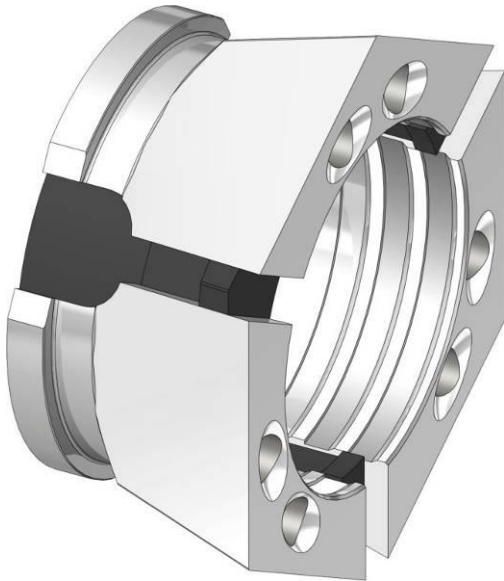
Smooth bore
for clamping
finished surfaces



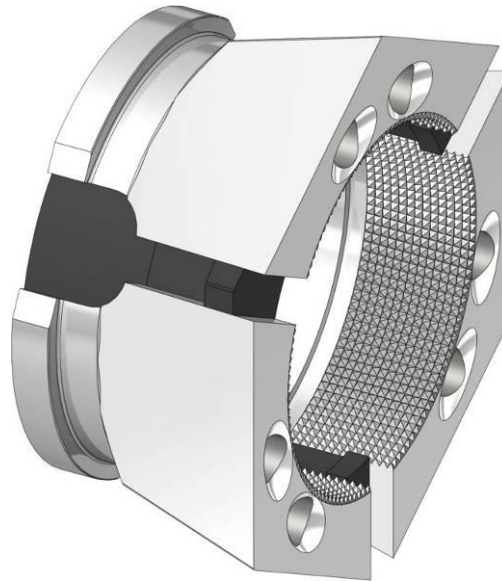
Radial and axial grooves
Standard-serration for raw
material clamping

Clamping profiles

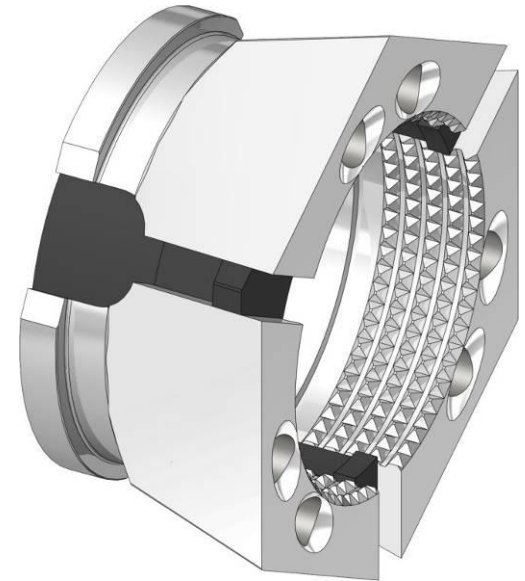
Many possibilities:



Only radial grooves
Raw material clamping
of smaller diameters.



F-serration
Small pointed teeth for
clamping smooth and tough
raw material

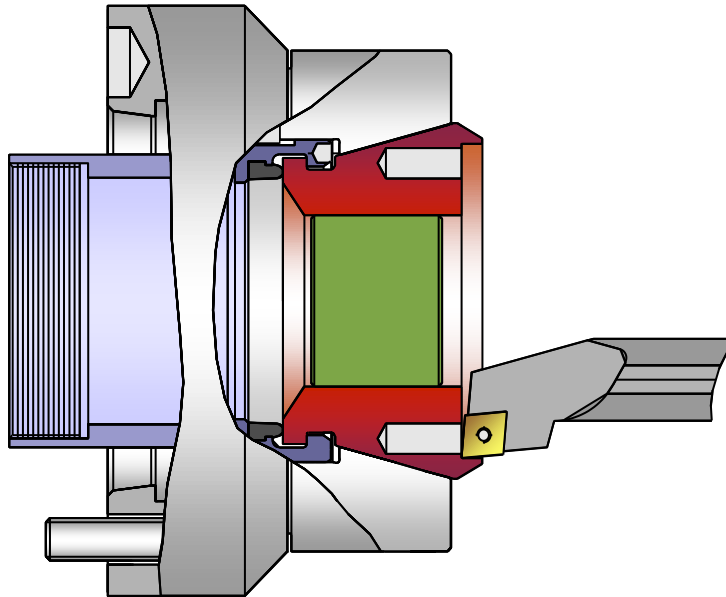


Z-serration
Powerful teeth for raw
material clamping
of rolled material
[oxidized material]

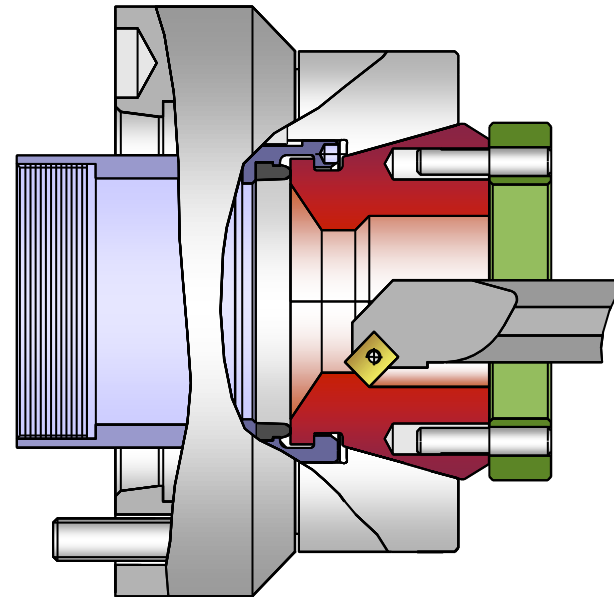
HSW clamping heads

Machineable clamping heads for O.D. clamping:

- React quickly on custom sizes
- True run = machine precision



Preparation of a counter bore
for larger clamping diameters

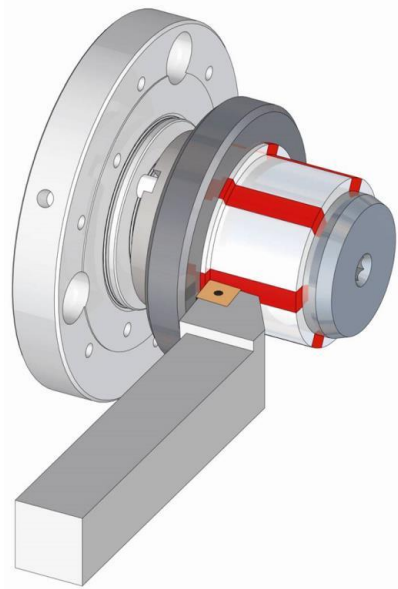


Preparation of a through bore

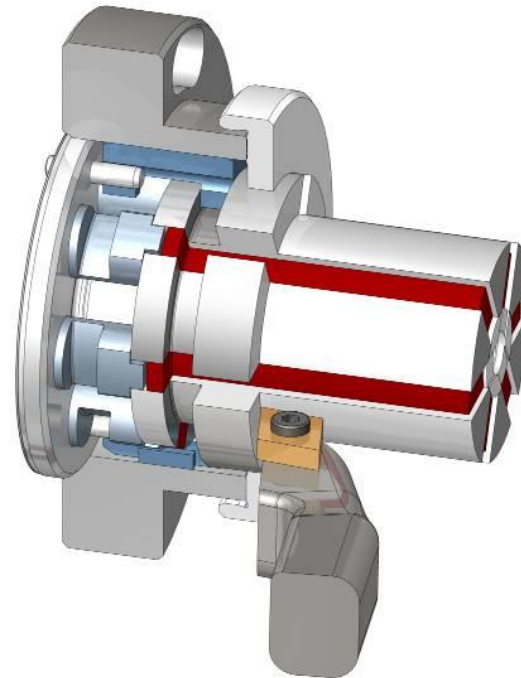
SAD bushings

Machineable bushings for I.D. clamping

- React quickly on custom sizes
- True run = machine precision



Preparation of a bushing
with draw bolt



Preparation of a bushing
without draw bolt

And what can we do for you?