

B-Top3

jaw chuck and modular system

Modular system B-Top3

Usage as 3 jaw chuck :

- Highly efficient wedge bar system
- Chuck size 215
- Capacity 62 mm [2.4"]



Modular system B-Top3

Usage as 3 jaw chuck:

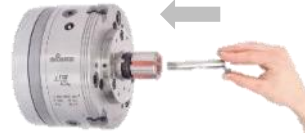
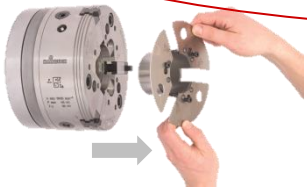
- Jaw stroke 14 mm [.55"]
- Single release of jaws
- Quick-change jaws



Modular system B-Top3

Switch from jaw-chuck to mandrel:

- Jaw chuck for large diameters
- Machining between jaws
- ...Change to specialized workholding for a better performance



I.D. clamping without interference contour with MANDO adaptation.

Modular system B-Top3

Switch from jaw-chuck to clamping head:

- Jaw chuck for large diameters
- Machining between jaws
- ...Change to specialized workholding for a better performance

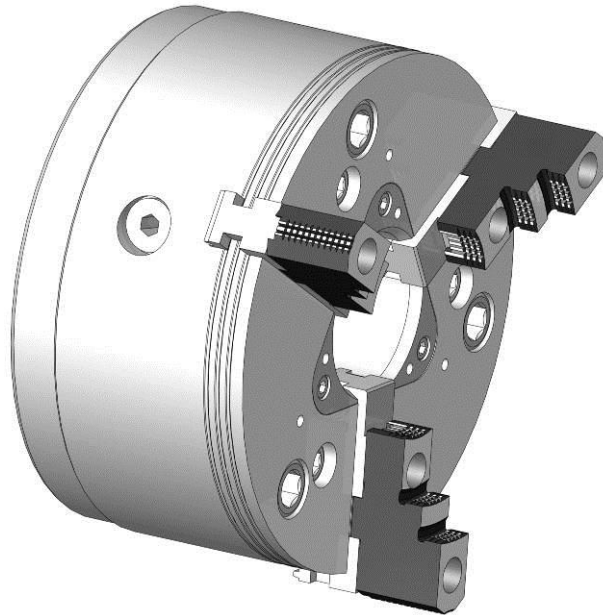


Enclosed O.D. pull-back clamping with SPANNTOP adaptation

Modular system B-Top3

Three clamping technologies united in one chuck:

- Change in less than 4 min to clamping head or mandrel I.D. clamping
- No necessity to align the adaptation



Jaw clamping



SPANNTOP Adapt

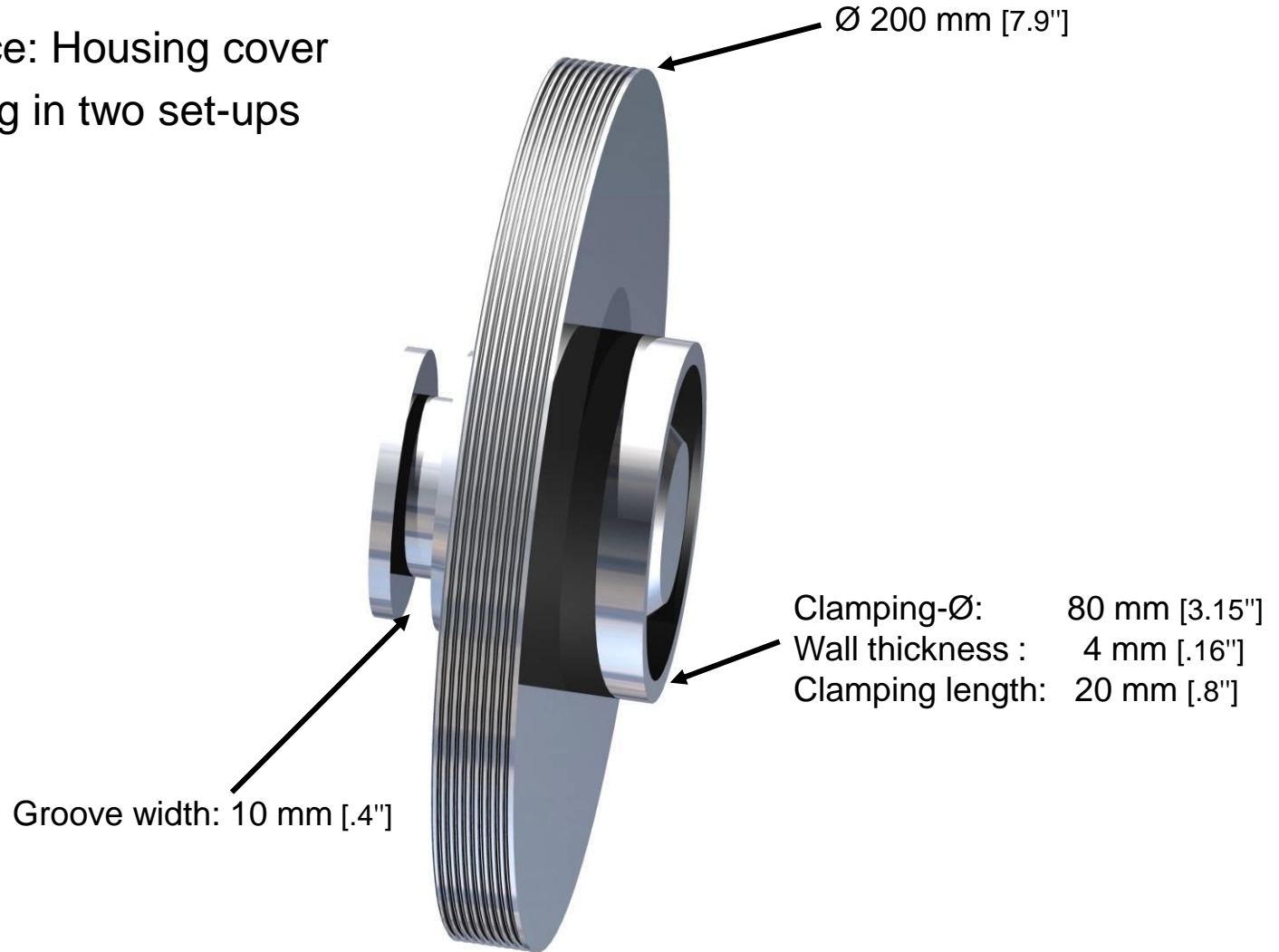


Mandrel
MANDO Adapt

Modular system B-Top3

Application:

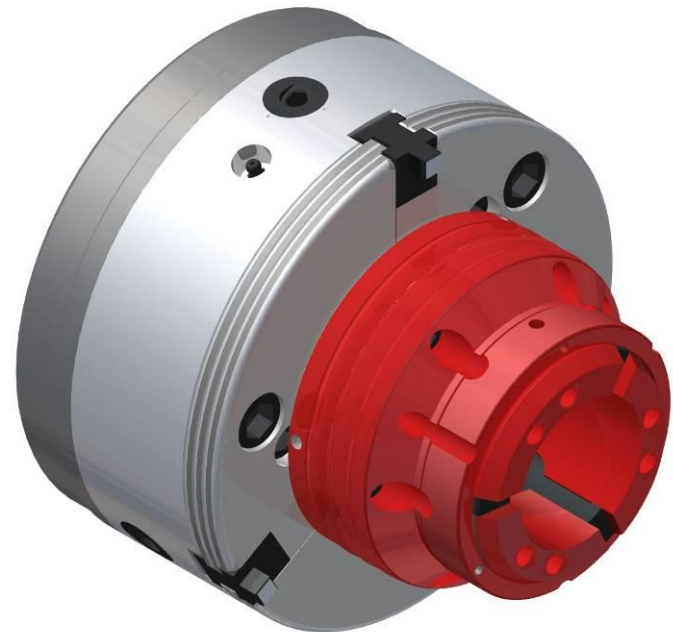
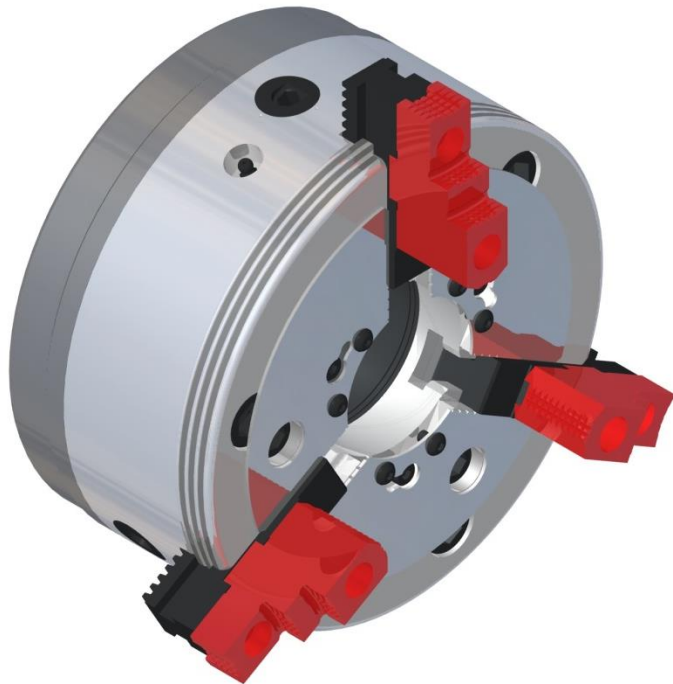
- Workpiece: Housing cover
- Machining in two set-ups



Modular system B-Top3

Application:

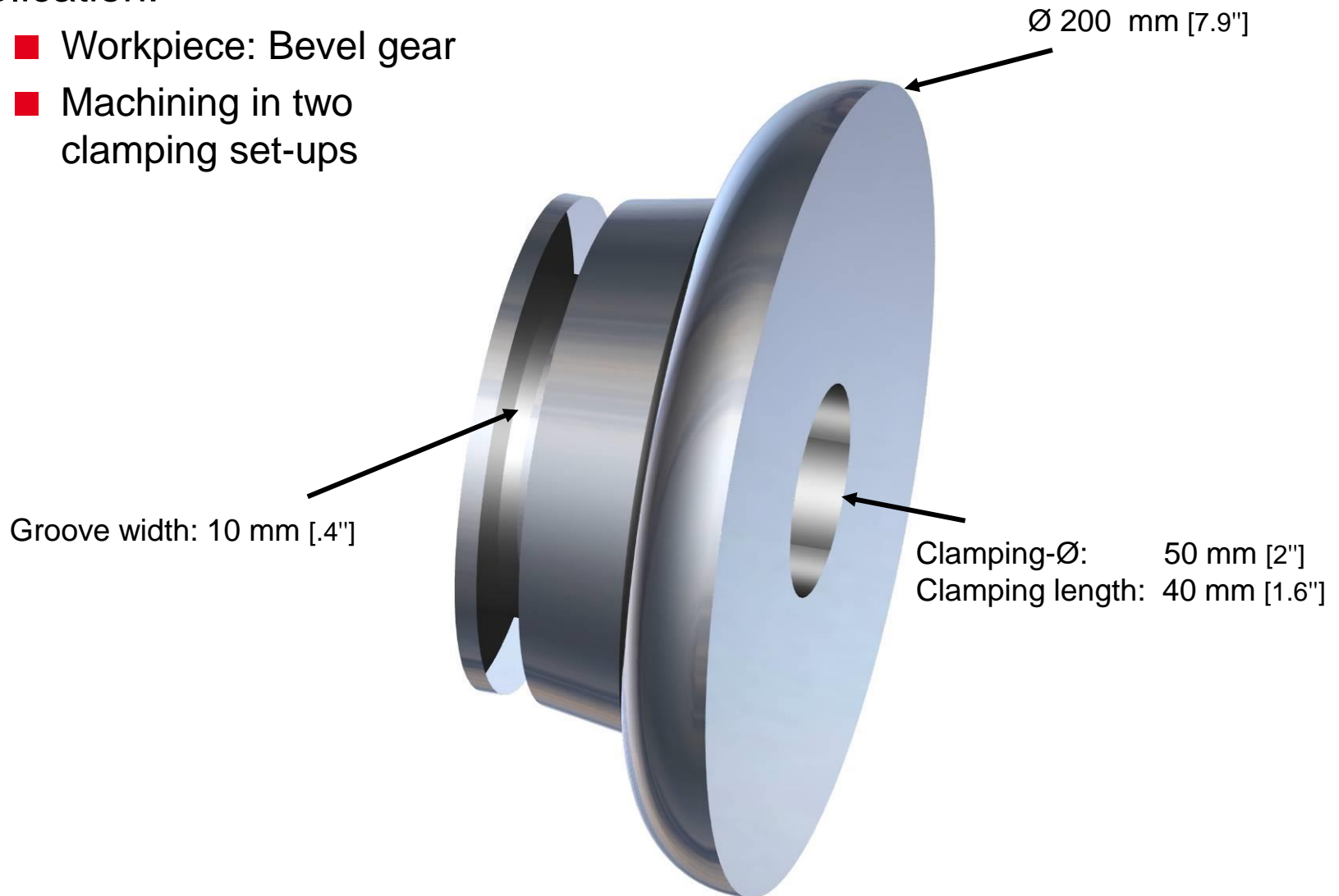
- First set-up with jaws
- Second set-up with SPANNTOP Adapt, clamping thin walled section with thickness of 4 mm [.16"]



Modular system B-Top3

Application:

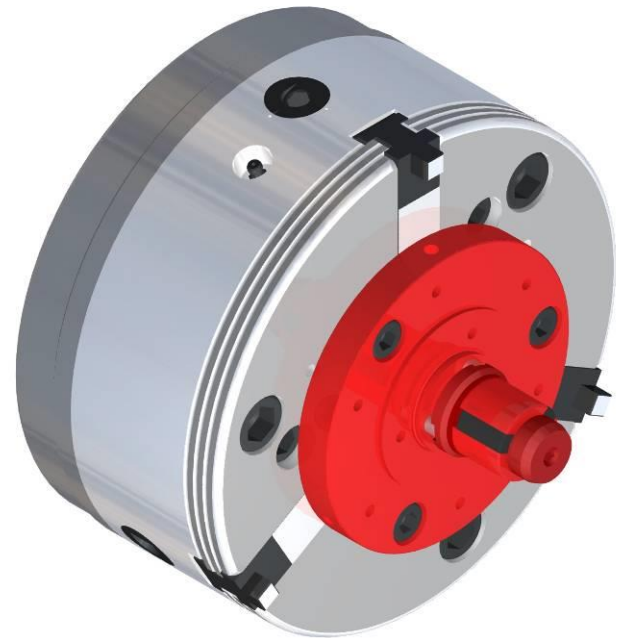
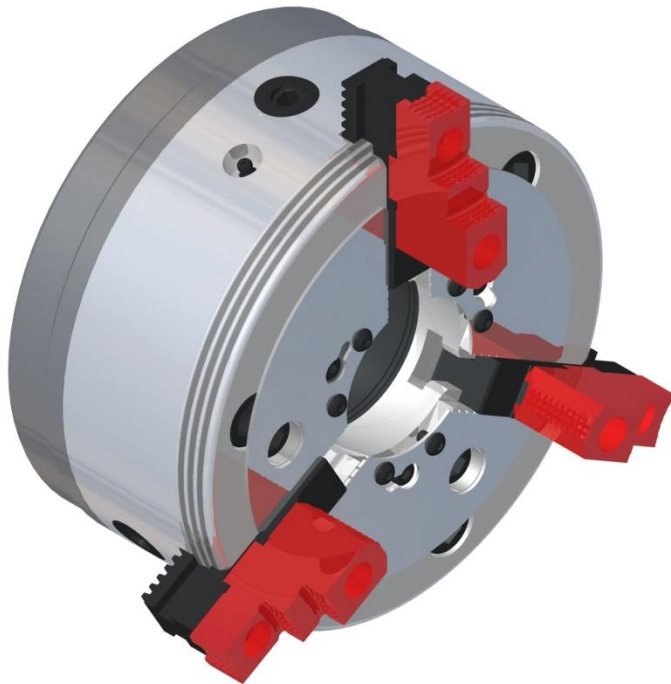
- Workpiece: Bevel gear
- Machining in two clamping set-ups



Modular system B-Top3

Application:

- First set-up with jaws
- Second set-up with mandrel MANDO Adapt, in bore \varnothing 50 mm [2"]



Modular system B-Top3

Overview:

Jaw chuck

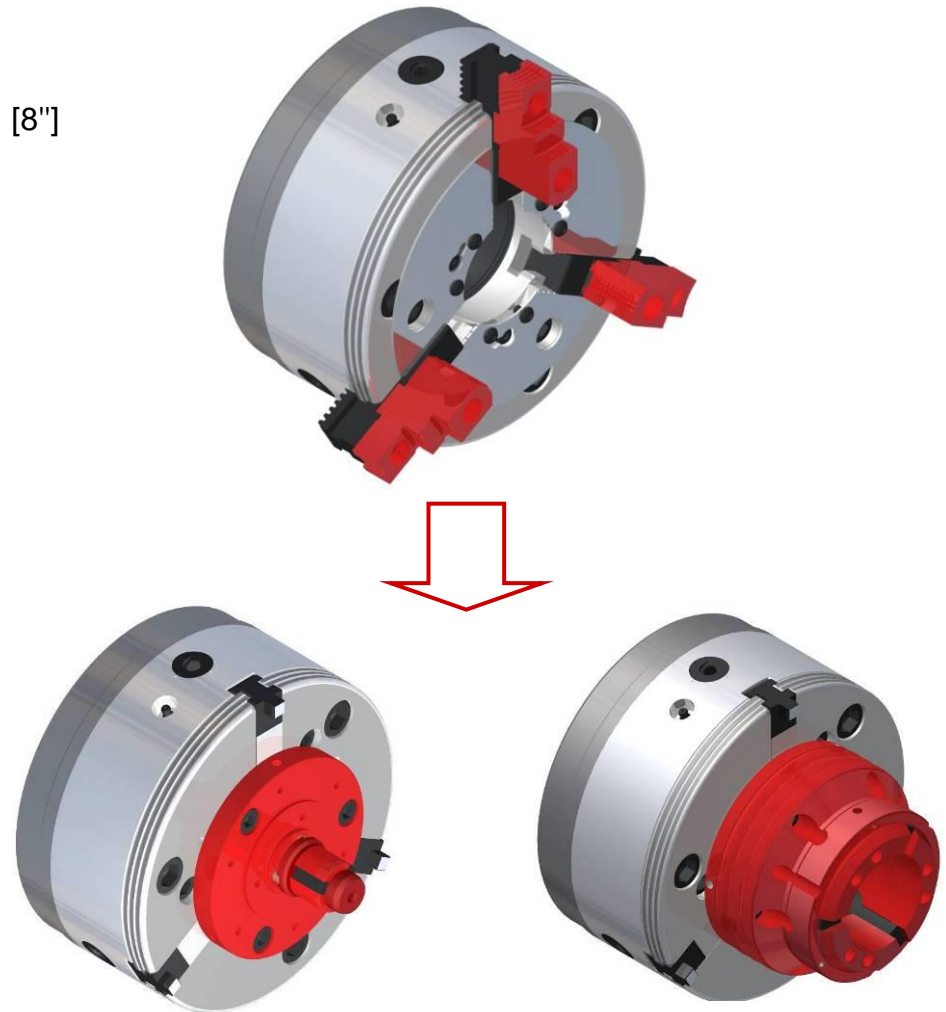
- Max. outside clamping 205 mm [8"]
- Chuck capacity \varnothing 62 mm [2.4"]

SPANNTOP Adapt

- Clamping \varnothing 4-100 mm [.16" to 4"]
- Chuck capacity \varnothing 51 mm [2"]

MANDO Adapt 215

- Clamping \varnothing 20-80 mm
[.8" to 3.2"]



And what can we do for you?